

2022 Aquatic Vegetative Control Program

AKA Weed Harvesting

Updated 8/2/2022



Basic Program Plan for 2022

- In-water service June 13th – September 9nd, 2022 (14 weeks of in water service across 5 embayments)
- 3 harvesters with a crew of 3 full time & 2 part time working as 1 crew
- This schedule is subject to change based on water quality needs and will be prioritized by the District's Management.
- Weekly weed and water quality review by staff and Thursday outreach as completed in 2021. E-blast sign up. Sign up on website.
- Outreach information and schedule updates will be at WayneCountyNYSoilandwater.org > Calendar
- Mission: The District will mechanically and selectively harvest areas of invasive species to manage the embayments of Wayne County.
- Vision of the program: (is based on our current policy guidance)

The management of critical aquatic invasive species, where impact to the environment and potential spread impedes access, uses, and overall water quality; and to address in-flow areas of the tributary streams to promote water circulation and aeration.

Forecast for Summer 2022 water levels

TODAY: 8/1/2022 245.64

(7/13/2022) 246.01
(7/8/2022) 246.03
(6/30/2022) 246.35
(6/23/2022) 246.35
(6/9/2022) 246.55
(5/17/22): 246.6

Projected trends for the summer:

June 17th – 246.6

July 1st – 246.00

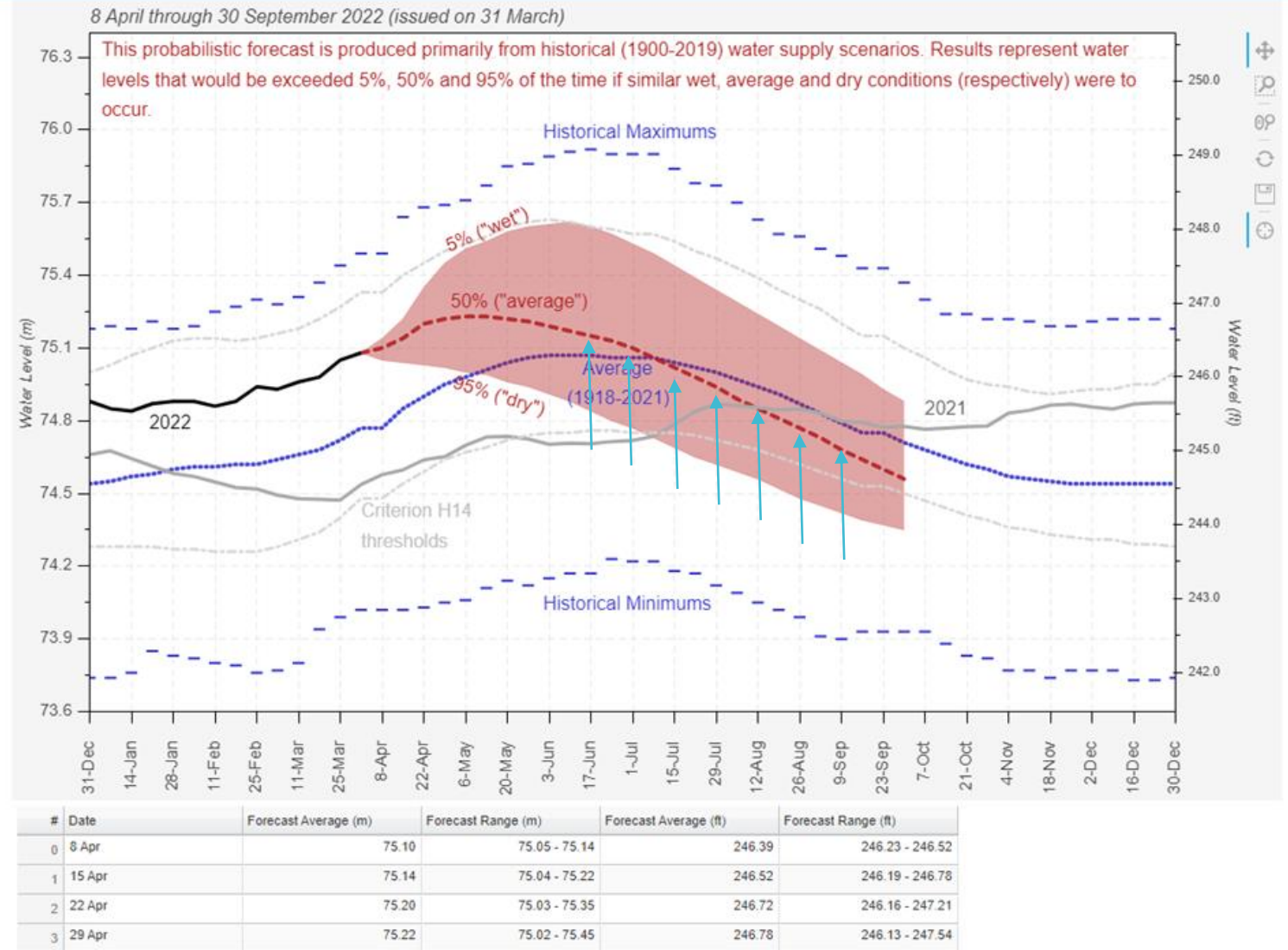
July 15th – 245.8

July 29th – 245.75

August 12th – 245.5

August 26th – 245.35

September 9th – 245.00



<https://tidesandcurrents.noaa.gov/map/?id=9052030>

Water Chestnut & How it affects you?

- Water Chestnuts (*Trapa natans*)
- Aquatic annual floating plant
- 1 seed can produce up to 20 rosettes
- 1 rosette can produce up to 20 seeds
- The seeds can survive up to 12 years.
- No local animals or fungus to prey upon/control them
- **This plant will take over an entire area and kill the ability to grow anything else by choking out the oxygen. Can add to Algal Blooms and Cyanobacteria Blooms.**

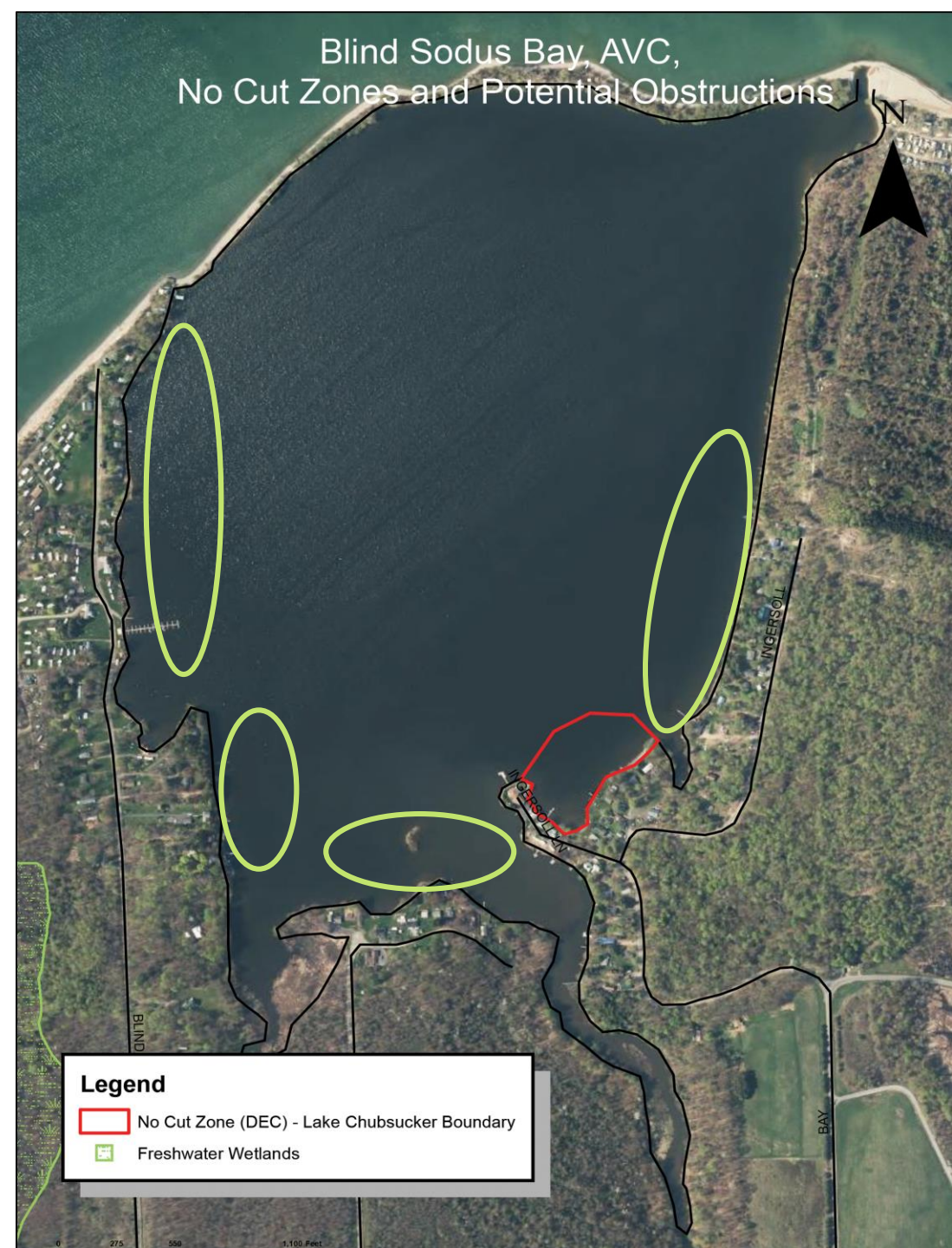


How YOU can help?

- Hand pulling them when you see them in the water
- Proper disposal off shore by composting or bag and let sit in the sun before disposal
- Cutting the rosettes

Blind Sodus Bay Low Water Plan for Management in 2022

BSB has open water exposure due to the barrier bar erosion. Three types of Pondweed grow in these areas and usually show up end of July. 3-4 days of service with 1 harvester will accomplish management. Goal is to be here after first services of PB. Week of August 8th when pondweed is at maturity.



East Bay Low Water Plan for Management in 2022.

EBIA sponsors an annual chemical treatment through broadcast June 3rd, 2022. Service is dependent on need and timing of that application. Discussions with EBIA are continuing throughout the spring.

8/3 & 8/4 – 8/8 - 8/12
8/15-8/17

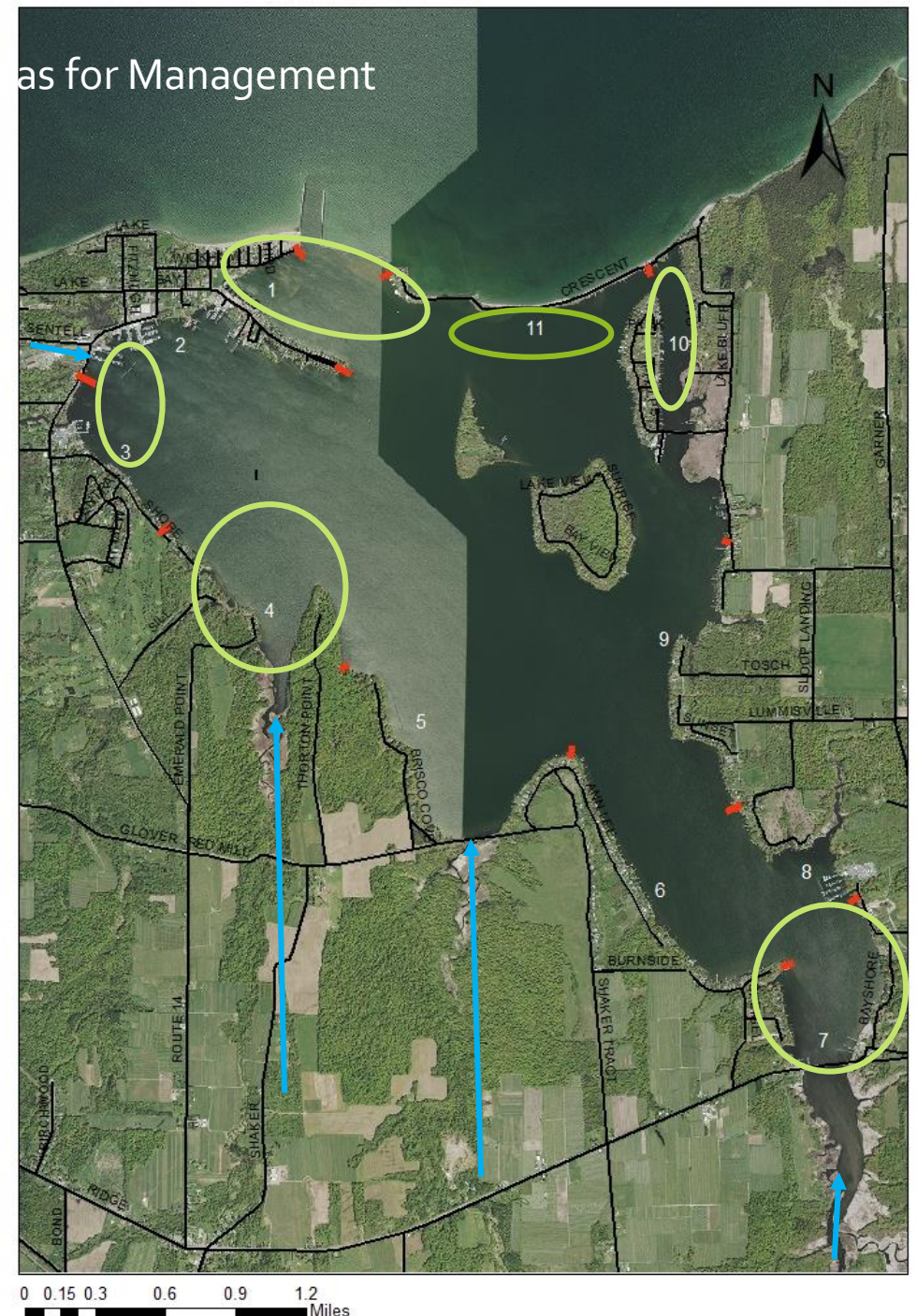
East Bay is a shallow freshwater bay. Annually the EBIA manages the closure of the bay's channel to manage useable access of dock areas.



Sodus Bay Low Water Plans for Management in 2022

- Started at site area 3, 1, 11, & 10 on 6/13 -6/22 and around the islands where necessary.
- Will service Area 9 because of Milfoil development to keep flow.
- N. of Bay Bridge first two weeks of July.
- Area 8 has peak potential for Cyanobacterial Blooms, the crew cut paths on Thursday, July 7 and Friday morning with hopes of returning Monday with better access.
- Water level loss of 3+ inches have exposed more invasive problem areas. All of Sodus Bay will be reviewed for continued season management.

Will return to Sodus Bay Areas 1, 11, 10 on 8/22-9/9 through the remainder of the season water level depending and plan to end at area 3.



Cancelled due to inability
to access, shallow
sedimentation at access.

South of Sodus Bay Bridge

Goal: 5th year of
management of
Water Chestnut
that can infest
and destroy ALL
of Sodus Bay if
not managed.

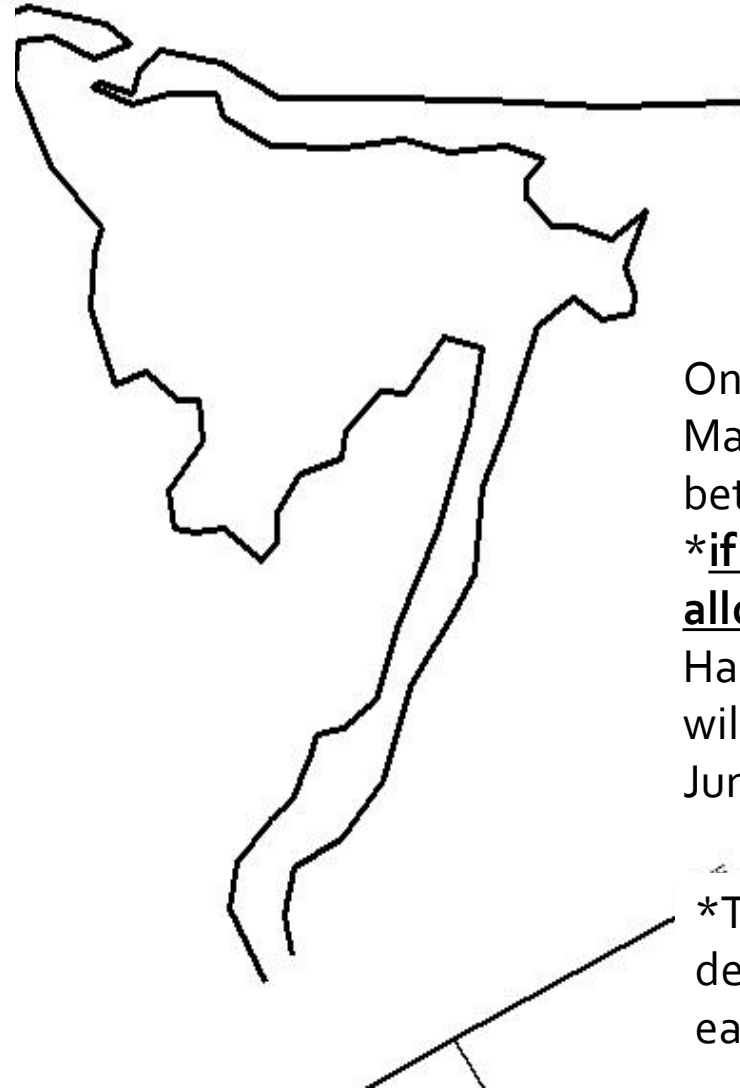
Sodus Creek provides 85% of
the watershed in-flow to
Sodus bay.



NOTE: The AVC
program will be
working in areas
during the holiday
week where we will
not impede boat
traffic



CANCELLED:
Maxwell Bay
Low Water
Plan for
Management
in 2022



One harvester to
Maxwell Bay
between July 5th-8th
***if water levels
allow.** Hand
Harvesting efforts
will begin end of
June.

***This will be
determined in June
early on.**



Port Bay Low Water Plan for Management in 2022

Plan to be at Port Bay 7/18– 8/5.

Access will not be an issue at PB in 2022.

Both NYSDEC Fishing Access Sites will be open all season.

Will start on north end and address cove areas first, hit the northern east side before heading south.

