



# Conservation at the Core of Wayne County

# The Dirt & Worms of Wayne County

## Conservation Cornerstones

We are the "Dirt and Worms," of New York State. Agriculture is our number one industry, and we are proud to be the "Dirt and Worms" of New York State. Agriculture is our number one industry, and we are proud to be the "Dirt and Worms" of New York State.

**In Wayne County, our local Soil and Water Conservation District's mission is to support and protect the natural resources of Wayne County. With the changes in weather patterns, legislative priorities and technological advances in growing food, the District has been able to take part in managing "dirt" and "worms" by providing technical assistance to all landowners who request support through over 30 programs offered in 2022. Many of the programs at the District revolve around two strategies: Protection of Top Soil / Soil Health and Water Quality. All conservation leads back to these two priorities as cornerstone of the foundation of management, monitoring and maintenance.**



In 2023, consider setting the foundation of your own management strategies for your property by considering impacts to Soil Health & Water Quality by developing a good plan. Technical Assistance is available to any who request it, in the form of planning discussions, resource connections and awareness. These requests can be made by visiting the District website <https://waynecountynvsoilandwater.org/request-assistance/>

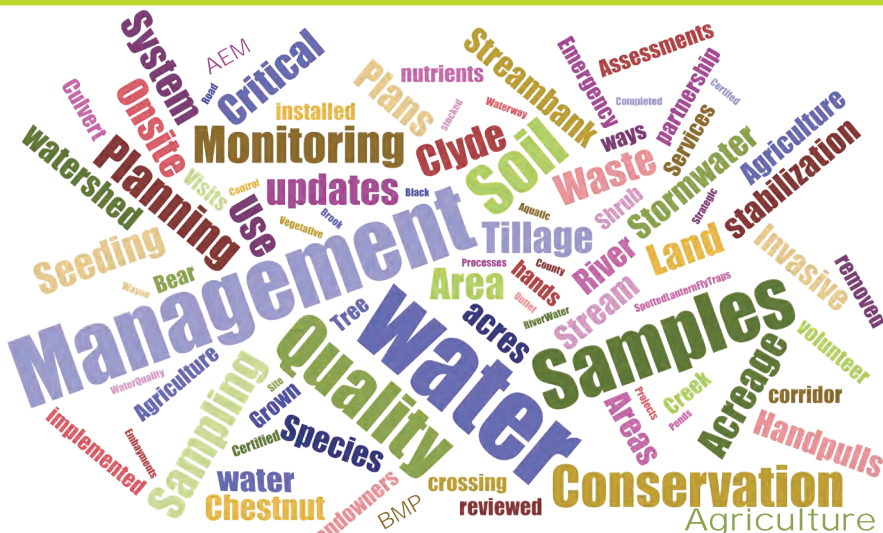
Creepy, crawly candies make this dessert fun to eat!  
Perfect for spooky Halloween fun.

- 2 cups cold milk
- 1 (4-ounce) package chocolate instant pudding
- 1 (8-ounce) container whipped topping, thawed
- 1 (16-ounce) package Oreos, crushed to crumbs
- Gummy Worms
- 10 (8-ounce) plastic cups

1. Pour the milk into a mixing bowl and add the pudding mix. Beat with a wire whisk until well blended (about 2 minutes) and let pudding stand for five minutes.
2. Fold whipped topping into the pudding very gently until it is all the same color.
3. Place about 1 tsp. of the crushed cookies into the bottom of each cup, then add about 2 tablespoons of pudding to cup.
4. Repeat another layer of cookies, then pudding, ending with another layer of cookies.
5. Finish by adding 2 gummy worms to the top of each of the cups. Put cups into the refrigerator for about one hour to chill.

## 2022 Milestones of Conservation

- Water Quality & Land Use Plans 135
- Watershed Management Planning 3 in progress for Bear Creek ETA Winter 2023, Black Brook ETA Spring 2023 and Clyde River Completed fall of 2022
- Water Quality Sampling and Monitoring 32 Samples
- Stormwater Site Visits 8
- On-site Waste Water Management System updates 6
- Streambank stabilization projects 1
- Stream corridor crossing projects 9
- Critical Area Seeding 3.45 acres
- Conservation Tillage Acreage installed 245.06 acres
- Soil Samples taken 33
- Invasive Species Management Areas reviewed and management implemented by volunteer hands / projects 2
- Water Chestnut Hand-pulls and 6 Spotted Lantern Fly Traps
- Aquatic Vegetative Control Management on 4 of the 6 Wayne Cnty Embayments totaling 1740 tons of nutrients removed from water ways (435 loads, 2,346 lbs of organic Nitrogen, 382.8 lbs of Phosphorus
- Waterway Outlet Management for Emergency Services/ landowner partners 2
- Strategic Planning Processes with County and State Partners 9
- Fish Pond Stocked 28
- Planning activities for general conservation 58
- Road Stream Culvert Assessments 17 & 2 new certified technicians
- Tree & Shrub products distributed 8290



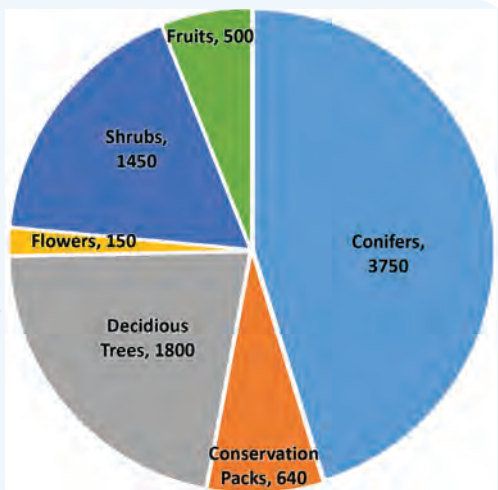
- Wildlife Houses distributed 65
- Pond Consultations 4
- Conservation Tillage Rental Program 14 renters, 310 Acres
- Barley Straw Rolls for Pond Assistance 151 Barley Straw rolls
- Ag Assessment Worksheets 155 worksheets, 7671.49 acres
- Certified Crop Advisors 2
- Certified Stormwater Inspectors 2
- Ag Best Management Practices implement 12 on 10 farms
- Natural Resource Training on technical management options hours 112
- Ag Drainage preformed 5.1 miles

## Forever Green= clean air by planting trees

**Trees act as the earth's purification system by absorbing airborne chemicals and releasing oxygen.**

Over 7000 trees & Shrubs and 1,290 conservation planting items contributed to a successful conservation effort in 2022. Holding true to the "Forever Green" sale name, nearly 1/2 were tree sales. 640 conservation packs; an assortment of various trees, flowers and deciduous shrubs, ground covers and berry plants. Be sure to subscribe to the e-blast list to be notified when the sale does live.

The 2023 Forever Green Tree & Shrub sale begins in January. There is a signup form on the District's website to place an order visit [waynecountyNYsoilandwater.org/tree-sale/](http://waynecountyNYsoilandwater.org/tree-sale/)



**2022 Board of Directors**  
 Mark Humbert – Chair, Farm Bureau,  
 Lynn Chatfield – Vice Chair, County Legislator  
 Steve Olson – Treasurer, Member At Large  
 Patricia VanLare – Grange Representative  
 Richard Lasher– County Legislator

**2022 Conservation Staff**  
 Lindsey Gerstenslager MEd, District Manager  
 Bethany Comella, Conservation Sec./Treasurer  
 Ronald Thorn, CCA, Conservation Field Manager  
 Chris Hottot, CPESC., Senior District Technician  
 Scott DeRue, NYS\_E6SCCP, Senior District Technician  
 Ian Priestley, CCA, District Technician, AEM Specialist  
 Drew Starkey, District Technician  
 Bob Hutteman - Professional Engineer  
 Maxine Appleby, Conservation Public Relations Specialist



# Conservation Awards

## Local leadership is recognized for outstanding service by New York Association of Conservation Districts



Steve Olson Distinguished Service Award

The world is run by those who show up” were never truer words spoken to best describes two of our very own local leaders that were honored recently at the Annual Meeting of the New York Association of Conservation Districts in Cazenovia NY. Steven “Steve” Olson, of Lyons, NY for Distinguished Service and Maxine Appleby of Sodus Point, NY for the William “Bill” Peoples’ Lifetime Service Award for Conservation were honored for their long standing commitment to serving Wayne communities by continuing to share their knowledge and wisdom of conservation.

Distinguished service is special and rare award to be presented, in these days of over commitment and social media but to Steve Olson it is just another day. He has dedicated his working career and now, well into retirement, volunteers to serve local communities. His big hearted nature is “Lively, and committed.” He brings discussion, consideration and perspective to every meeting and participates openly while extending conservation as part of his everyday life. If Steve see’s he can provide a services or contribution, whether it be a partner meeting, school education event, or daily operations, he shows up to help!

Steve and his wife, Sue, have lived all over the country and have traveled all over the world impacting agriculture through their in-depth involvement in quality food. Steve is the founding father of meat cutting and inspection programs with the Food & Drug Administration and has supported policy development all over the world for standards on meat inspection processes. They moved back to Lyons, NY to extend the life of the family farm; operating a herd of beef, goats and chickens. The Olson’s were actively managing and participating in local and state legislation and practice improvements through NY Farm Bureau, Cornell and then joined the NYS Agriculture Environmental Management (AEM) program at part of local conservation with Wayne County SWCD. Steve has grown in the AEM program extending his changing farm’s conservation plan annually; also working with USDA, and sharing his knowledge through his roll with NY Beef Council, Vice Chair of Marketing and now the President Elect.

Steve is a natural recipient for this award because of his continued “practice what you preach” mentality. He is forever, indicating to staff, when looking at policies and procedures, projects or programs we need to make sure we are fulfilling the success of core conservation like conservation cover, soil health, nutrient management and livestock happiness. His continued dedication to his role as a District Director extends the participation, policy and promotional needs of our local and statewide Soil and Water Conservation Districts.

William “Bill” Peoples, of Addison NY is honored by the New York Conservation community as a friend and person who is willing to participate and advocate even after their “term” is up. Bill sadly passed in 2021 and has been memorialized by this special award. Maxine Appleby, Conservation Public Relations Specialist of Wayne County Soil & Water Conservation District was honored with this award because of her continued efforts to serving her community and truly understanding the mission of protecting natural resources.

Maxine began with the WC Soil and Water Conservation District in October of 2013. Over the last 9 years she has continued to extend the vision of conservation to honor and protect water quality with efforts related to watershed education, community awareness and over-all extension of love for the beauty of nature in upstate New York. Her quality and quantity of public engagement ideas for improving conservation never ceases to amaze her peers. It always is extending her passion for the communities she serves.

Being semi-retired did not impact her willingness to be a part of public service when it came to clean water and conservation. She is



Maxine Appleby, William “Bill” Peoples’ Lifetime Service Award for Conservation

passionate about the great lakes, conservation education, her community, fisheries and natural resource.

She has a long list of success’ in her time at the District, guiding the public relations and outreach to the next level. Some of her key attributes include the development of guidebooks for shoreline management techniques that have been adopted by 7 other lake communities across the state and in partner with the SWCDs of those communities. Her invasive species calendar, ID guidebook and teachers guide have influenced over 15 school districts in the area and is available to any other schools that wishes to include local issues within their curriculum. Her latest success is with partnering with Wayne County Federation of Sportsman to co-host an annual Youth Fishing Derby of which she has served on for 4 years. She is a true leader in conservation and the core of what it all means.

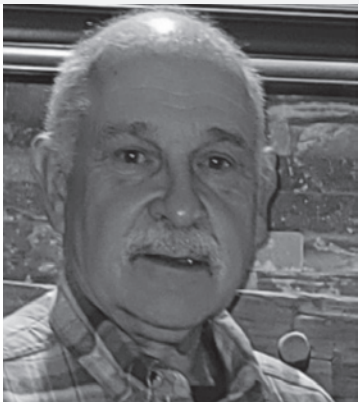
Our local Soil & Water Conservation Districts’ Board of Directors were excited and honored to be able to nominate these individuals as a small token of their contribution to conservation. The New York Association of Conservation District is a coalition of Soil & Water Conservation District Director Leadership, who interact and discuss local issues that stems from Counties and impacts conservation, water quality, land management and overall community health. This organization helps to network all of New York to work on key issues that impact us all.

**District Board meetings are open to the public and are held in person and online via zoom, on the third Wednesday of each month. Check the website for an agenda and zoom details.**

## 2022 District Board Members



Mark Humbert, Chairman, Farm Bureau Representative, has been a member of the District’s Board of Directors since 2015.



Steven Olson, Treasurer, Member at Large, has been a member of the District’s Board of Directors since 2015.



Patricia “Pat” VanLare, Grange Representative, has been an official member of the District’s Board since 2018.



Lynn Chatfield, Vice Chair, Legislative Representative, has been a member of the District’s Board of Directors since 2018.



Richard Lasher, County Legislator Representative, has been a member of the District’s Board since 2022.

**New York State Soil & Water Conservation District Law is part of Chapter 9B of the Consolidated Law of NY can be referenced at [leginfo.state.ny.us](http://leginfo.state.ny.us) and under Laws type in SWC**

### Do You Need Assistance?

The District Team now has a simplified method for landowners, municipalities and school programs to be able to apply for technical services or assistance. To request assistance on a project, to identify a known concern within the community, or seek potential financial assistance on a project, requests can be made by filling out standard information on a one page form. This gives the District Team the ability to more efficiently track and provide conservation assistance while managing other regular responsibilities.

**[www.waynecountyNYsoilandwater.org/create-conservation/](http://www.waynecountyNYsoilandwater.org/create-conservation/)**



# Living within the waters of Wayne Lake Ontario to the Central Canal Corridor

One of Wayne County’s greatest strengths is its waterways. Clean, healthy waterways provide overall community health. In order for a water system to be healthy means there needs to be a full food chain, flow and exchange of water over time.

Over the years and through changes in the landscape, many of the connections for creatures have been broken which has cut them off from parts of the landscape to keep a balanced food system which in turn creates continually healthy waterway. Other effects are caused by non-point and source pollution.

Wayne County is home to 75 miles of shoreline along Lake Ontario. There are several waterways and estuary systems that provide many areas of connection and habitat for fish, and small water creatures that help manage vegetations, algae, and other food chain connections.

Many of the embayments include fresh water estuaries where upland watersheds/ways meet larger bodies of water. Many people consider these wetlands but they have a broader impact than just a marshland. These areas provide “home coming” for several species that travel there each year for a specific purpose.



Beaver Creek / Port Bay

**Freshwater estuaries** are semi-enclosed areas of the Great Lakes in which the waters become mixed with waters from rivers or streams. Although these freshwater estuaries do not contain saltwater, they are unique combinations of river and lake water, which are chemically distinct NOAA

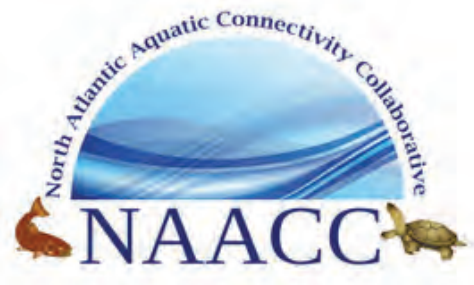
### Definitions

**Point Source Pollution** is pollution that can be defined from a specific source and can be identified with its contributions.

**Non-Point Source Pollution** is still pollution but that cannot be easily defined or identified because it could be from several sources together.

The District is working on

several projects that address waterway planning and build together to address several of the pollution considerations over the next few years. These projects are complicated because they include many partners from Federal, State, Non-Government Operations, local associations, local government officials and independent landowners.



## Northern Atlantic Aquatic Connectivity Collaborative (NAACC)

The District now has 4 certified culvert inspectors to address infrastructure through aquatic connection while maintaining flow. Sponsored by NYSDEC and US Fish & Wildlife, NAACC offers some unique opportunities for municipalities to apply for special funding that will aid in design and construction for culverts that are inspected this way. Since 2018, the District Technicians, Chris Hotto and Ian Priestley have been working through the public culverts along all the tributaries that flow to Lake Ontario. Starting in 2022, two more District Technicians, Scott DeRue and Drew Starkey were certified and will begin working through the public culverts, bridges and crossings along the watershed of the Central Canal Corridor.



Details on this program can be found at [www.streamcontinuity.org/naacc](http://www.streamcontinuity.org/naacc)



Great Lakes Restoration Initiative (GLRI) Habitat Management program has sponsored a project in Wayne County that will address Aquatic Connection between Lake Ontario and Beaver Creek which is part of Port Bay. This is an effort of partnership for better planning and understanding of flow for pollution mitigation within Wildlife Management Areas in Wayne County. Scott DeRue and Drew Starkey are working with NYSDEC Region 8 Wildlife Management Staff to address several suspicions through conservation planning, while also addressing infrastructure replacement with a private consultant, the Town of Huron Highway Department and Wayne County Public Works for advisement.



**Interested in other projects in the area? Check out the GLRI sorting tool on their website: <https://www.glri.us/projects>**



## Water Quality Begins with Nutrient Management



In the recent years, several horse farms have been calling for technical assistance for manure relocation and management opportunities. Burl Creek Farm, of Arcadia NY participated in a full scale farm plan with the District’s Agriculture Environmental Management (AEM) Staff and was competitively successful for a FLOWPA cost share for putting in a composting pad moved away from Lower Ganargua Creek. The farmer works with another local farmer to take his manure periodically for field application. By siting the manure in a better location and with better access, it can be retrieved easier and with less chance of spill.

Finger Lakes Lake Ontario Watershed Protection Alliance is a group of 25 Counties that work on specific projects related to water quality management that reduces contribution to the Lake Ontario and Finger Lakes Watershed. Since most of the Finger Lakes flows to Lake Ontario and all of the water in Wayne County flows to Lake Ontario eventually, the entire county is eligible to participate.

## Lake Ontario REDI Projects UPDATE

**Resiliency Economic Development Initiative (REDI)** continues to move forward with Blind Sodus Bay and Port Bay projects. The pandemic issues related to contractor availability and material costs have slowed the projects down, but the biggest slow down has been with regulatory review and response. As informed in several of the meetings in 2019’s REDI selection process, the goals do not meet the regulations on how they currently stand. The REDI Commission and the state staff have been aware and are documenting these needs as each of the 132 projects continue. Different State Departments are working on the documentation and science to show the needs for change as well as the International Joint Commission who has started their review of the lake level changes to the lake and shoreline.

Overall, the District’s three projects are all moving with one under construction and the other two in final design and permitting reviews. Blind Sodus Bay: Western Bluff is a green to grey scale mitigation project that will build resiliency for the 83’ peak bluff face that has been eroding at an alarming rate since 2017. July/August of 2022, final paperwork was complete and moved forward into construction once final permits were received at the end of September. The Bluff has a wave run-up wall that goes to 256’ and then will be graded and vegetated back to the matching slop face this spring.

Both Blind Sodus Bay and Port Bay Barrier Bars are working through their final planning and design phases with hopes of being ready to go out to bid in the spring months.



Blind Sodus Bay Project: Martin Tidesides was the local chosen contractor, the project is about 40% complete at the end of 2022.



### Are You On Facebook?

Like our page at Wayne County Soil & Water Conservation District for continued updates and notifications about local opportunities



# Stormwater is the “new word” for Drainage!

New York State looks at stormwater and drainage differently depending on where you live and the land and soil types you have on your property. If you have a drainage channel on your property, it is the responsibility of the landowner to maintain it and to make sure it is managed regularly. Please note this when you take ownership! A large portion of the calls that come into the District are for maintenance on private tributaries.

The District can provide technical assistance for what type of contractor or other considerations for hiring a contractor to landowners but cannot maintain it for the individual landowner. The District will work with municipalities to address areas of stormwater management when many private landowners are concerned but that has to come from the municipality as a request.

The County does have the Agricultural Drainage program which has been managed by the SWCD since 1987 and provides regular drainage maintenance for main trunks of drainage connections that meet up with tributaries to stream corridors to address a much larger portion of land and to support agricultural property which provides food.

There are 67 projects on a 5 year revolving schedule of maintenance. In recent years, through New York State aid funding of \$6,000, the District tries to address a specific project related to stormwater and drainage in an area that will connect those projects and continue to improve agricultural drainage that may be impacted by failing infrastructure, (i.e crossings, culverts, etc)



## Community Support through Combined Partnerships

The District continues to provide a technical assistance service through requests from county residents. These requests are attended to through an online request form or call. This helps us to track the continued need to communities and try to address these needs through strategic planning for land management with the municipal leadership in the community.

Sometimes the requests are simple knowledge transfer and can be answered easily by connecting resources and the correct network contact with the landowner. Other times, it may be a little more involved taking visits and time from both technical staff in partnership with the landowner. In 2022, there were 40 major requests that were filed with the District. A majority of the requests were related to stormwater and drainage flow issues.

## New York State Financial Assistance for Environment in Wayne County

- In the most recent years, the District has been able to achieve over \$156,000 in state aid specifically for Soil & Water Conservation Districts. This is achieved by completing a list of performance measures from year to year.
- The funding is then budgeted and allocated to local conservation programs and project needs by a local lead group of members of the District Board. This Board of Directors meets monthly to monitor the movements of the District’s Annual Plan of Work which is approved by the New York State Department of Agriculture and Markets, Soil and Water Conservation Committee which is made up of volunteers from around the state that are appointed by NYS Law.
- This aid varies each year. Any local group addressing conservation, and water quality can meet with the Board of Directors to seek partnership through Municipal and Landowner Assistance Programs, MAP & LAP. These programs are a way to connect local needs to science based design that will have a lasting impact on the local community.
- In 2022 State Aid funding assisted with several local initiatives:**
- Strategic Planning – NYS Department of State’s Coastal Lakeshore Economy and Resiliency (CLEAR) & Wayne County Shoreline Steering Committee
  - Strategic Planning - NYSDEC Integrated Watershed Action Plan for Wolcott Creek Watershed
  - Conservation Tillage Mitigation with the District’s 10ft No Till Drill
  - Envirothon – for high school students to study and learn about 5 areas of conservation plus public speaking.
  - Bare Root Stock Tree Sale
  - Critical Area Seeding with Hyrdoseeding & Mulching
  - Clyde River Watershed Assessment which provides a complete overview off the pollution and non point source potential pollution within this land
  - Partnership Assistance for Design and Discussion Maceyville Culvert Crossing Design with Village of Sodus Point & Genesee Land Trust
  - Specialized Software and equipment for surveying and nutrient management
  - Special Water Conveyance Project that impacted 6 landowners and a roadway for stormwater management.

Uncontrolled stormwater runoff has many cumulative impacts on humans and the environment including: Flooding - Damage to public and private property. Eroded Streambanks - Sediment clogs waterways, fills lakes, reservoirs, kills fish and aquatic animals. Widened Stream Channels - Loss of valuable property.

This coalition was formed in 2007 to support the MS4 needs of Wayne and Ontario County Municipalities that fell into the criteria for this regulation. By working together, the OWSC addresses the Stormwater pollution and non-point source pollution mitigation needed to make sure the member communities continue to have sustainable water quality and management plans in place to address them. Wayne County and Ontario County Soil & Water Conservation District’s aid the OWSC in advertismint and operational support.

**Visit: [www.owsc.org](http://www.owsc.org)**

**Drainage Law and Drainage Situations and Problems in NYS**

It is important to understand the New York State Drainage Laws and drainage situations and problems for surface water drainage and watercourses, it is important to distinguish between **“surface water drainage”** and **“natural watercourse drainage”** because the legal consequences of the alteration of either of these types of drainage may have a different result.

For example, although the drainage activities may be very similar in the construction of a highway, alteration of a drainage ditch, blockage of the flow of the water, increasing the water flow, alteration of the area where the water flows or other similar situations, the legal result and consequences can be very different for each of these types of drainage situations.

It is also very important to be aware that the facts can be only slightly different from one situation to another and a different liability or no liability may result.

**Surface Water Drainage:** is defined as the the passage thereof over the land until it either evaporates, is absorbed by the land.

**Watercourse Drainage:** is defined as a stream of water (such as a river, brook, or underground stream, natural or artificial channel through which water flows, such as a drainage ditch. (Merriam-Webster)

## Longstanding Area Drainage Issue Addressed

In 2022, the Town of Williamson requested Municipal Assistance in addressing this culvert crossing as it inlets in the Town of Williamson and outlets in the Town of Sodus. With state aid assistance, the District was able to successfully receive partnership approval from all involved landowners to address this culvert to provide better Stormwater management. Numerous complaints of flooding and drainage problems around the Tripp Road and Podger Road area, have opened up other discussions about watershed management and how infrastructure needs better cross municipal management planning. This area impacts an estimated 1,500 acres of fruit and vegetable production across 4 farms and 3 residential landowners.

After an initial review of the site, it appears that the main drainage channel in the area was in poor condition, undersized and likely the cause contributing to the issues. The replacement of this will aid in better flow of water during storm events and snag and drag removal of debris to allow for flow to continue into the watershed.

### Need Assistance?

Use the District’s Landowner Assistance Program form located on the website at [www.waynecountyNYsoilandwater.org/request-assistance](http://www.waynecountyNYsoilandwater.org/request-assistance)  
call 315-946-7200





# Invasive Species IN FOCUS

## Spotted lanternfly, an invasive species, continues to pose threats to orchards and vineyards

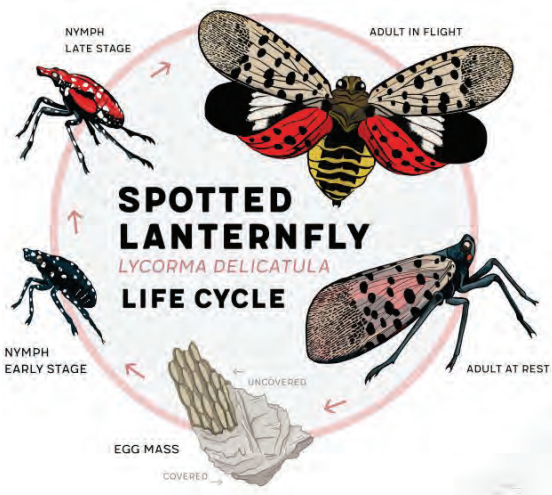
Did you hear about the spotted lanternfly on the radio this summer? Maybe



you saw one of the SNL or Jimmy Kimmel Sketches poking fun at these invasive bugs? Since spreading out of the Philadelphia region to the Pittsburgh, Baltimore, DC, and greater tri state areas, Spotted lanternfly has gained attention in the media.

Last year, spotted lanternfly was reported in 18 counties in NY. Most of those were only individual insect sightings. Six of the eight counties with confirmed infestations were in the southern Catskill or NYC regions. This year, the insect spread along the Rt-17 and I-87 corridors. Confirmed infestations were found throughout Long Island, from NYC north to Albany and west to Ithaca. Onondaga and Erie counties both found their first confirmed infestations this summer in railyards. Oswego, Yates, Ontario and Monroe counties have reported individual sightings as well. There are now 20 counties with confirmed infestations in New York State.

In 2022 the District partnered with FL-PRISM to implement a monitoring program in Wayne County. Genesee Land Trust had plans to place traps in the



north western portion of the county, so the District focused efforts along the Rt 31 and Rt 104 corridors. Traps were placed along popular travel and freight corridors. The insect spreads by hitchhiking or laying eggs on automobiles, tractor-trailers, and trains. Luckily, no spotted lanternflies were found in our traps this summer.

This insect poses a large threat to the grape, hop, and fruit industries. It uses its piercing/sucking mouthparts to feed on the sap of many different types of shrubs, vines, and trees. While older trees have enough resources (carbohydrates) to withstand a heavy infestation, smaller trees, saplings, and vines are much more susceptible.

As the insects feed on the sap, they excrete honeydew. This sticky substance is a great source of food for sooty molds that will grow on the leaves of the lower canopy and understory plants. A combination of these two factors (sap sucking and molds growing on honeydew) can create a large ecological and economic impact. Also, no one wants their back patio or favorite park bench to be covered in mold and bug poo!

Please take a few minutes to familiarize yourself with what spotted lanternflies look like. If you see an adult, or a juvenile, or egg mass please



**squish it, collect it, and report it.**  
email [spottedlanternfly@agriculture.ny.gov](mailto:spottedlanternfly@agriculture.ny.gov)



## Invaders in and Outside the Classroom Hands on Learning



Sodus Central H.S. Students - Scavenger Hunt

Sodus Central High School Students participated in an Invasive Species walk and scavenger hunt at Beechwood State park led by District staff member Maxine Appleby. Using the Invasive Species Field Guide and QR codes

from the Scavenger Hunt guide, they identified the top 12 invaders. Scanning the QR codes allowed them to better understand the effects these Invasive Species have on the environment.

After the talk they returned to their In school classroom to create posters and outreach materials that were on display for community members and students to learn from their experiences.

Experiential Learning is the process of learning by doing. By engaging students in hands-on experiences and reflection. When students participate in experiential education opportunities, they gain a better understanding of course material, a broader view of the world and an appreciation of community and self-confidence and leadership skills to educate others.

Drew Starkey was invited speak about invasive species at an outdoor classroom setting at Lyons Library. Drew covered the basics of invasive species biology, how some of the major ones in Wayne County, and the importance of acting fast when you find one.



Being a canal town, Drew highlighted the impact the Erie Canal had on the Great Lakes ecosystems. This 19th century commerce corridor connected waterbodies that had never before interacted.

As the lamprey specimen was passed around the group, They talked about how this prehistoric, parasitic fish native to the Hudson River was able to thrive on native fishes when it arrived in the Great Lakes via the canal.



Sea Lamprey models and stickers from the Great Lake Fishery Commission are available for the Classroom  
[Drew@WayneNYswcd.org](mailto:Drew@WayneNYswcd.org)



Invasive Species Guide, Invasive Species Calendars, Activities  
Workbooks, Sea Lamprey material, Invasive Species Scavenger Hunt, and other materials are available for the classroom



## 2022 Aquatic Vegetative Control (AVC)

Harvesting operations for the 2022 consisted of three full time employees and two part-time. At the start of the season in June, sparse vegetation collected in the Sodus Bay area of Margaretta Launch to along South Shore Road, and also out of the Coast Guard Station to Crescent Beach. More dense concentrations of vegetation were collected between Leroy Island and the mainland. By the end of the month, the southern portion of Sodus Bay near the bay bridge and Oak Park Marina had dense concentration of vegetation. By August, one harvester was on Blind Sodus Bay. Sparse concentrations of vegetation were collected in the southern portion for 2 days.

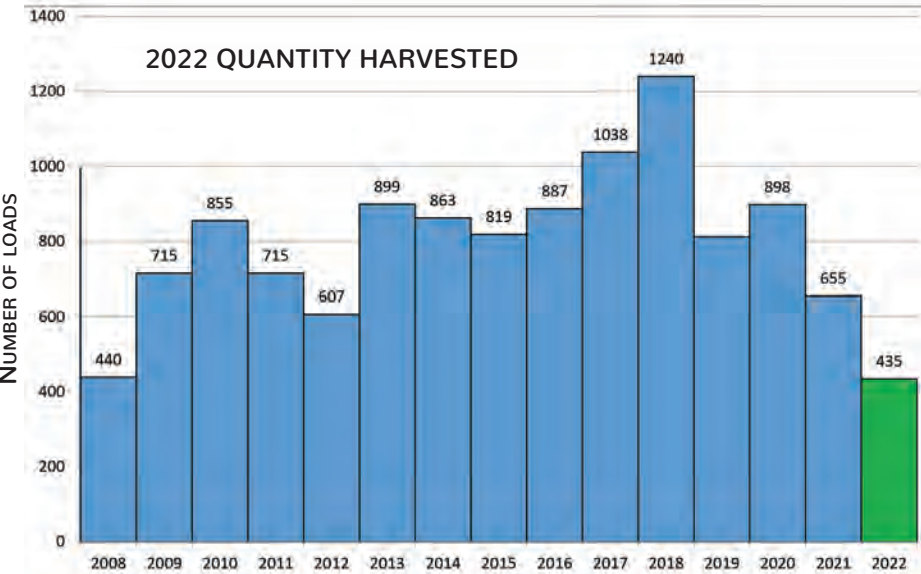
**Sodus Bay- 352**  
**Port Bay - 71**  
**East Bay- 4**  
**Blind Sodus Bay- 8**



Low water levels made both launching/trailing and harvesting operations difficult. Two harvesters were on East Bay. The Bay Association's herbicide application proved to work very well because only sparse concentrations were collected over 2 days. Upon returning to Sodus Bay, sparse to moderate concentrations were collected from Margaretta Road and along South Shore Rd. Dense vegetation concentrations were harvested at the south end of the bay near the bay bridge. To wrap up the season, sparse concentrations were collected out of the Coast Guard Station and along Crescent Beach.

### Acknowledgment

The success of this program depends greatly on numerous groups and individuals: Wayne County Board of Supervisors, Town of Sodus, Town of Huron, Town of Wolcott, Wayne County SWCD Board of Directors, FLOWPA, U.S. Fish & Wildlife Service, FL PRISM, NYSDEC and the numerous private landowners who provided access for equipment.





# Agriculture

Agricultural Environmental Mangement



## Implementing Best Management Practices to Address Water Quality Concerns at Maxwell Bay

Doyle Farm is located in Sodus, NY, a township bordering Lake Ontario. Dan Doyle, the owner of Doyle Farm, has been implementing Best Management Practices (BMP) for well over a decade from the time he purchased the farm. By implementing these BMPs it directly addresses water quality concerns listed in the Wayne County AEM strategic plan. The cattle pasture has a tributary that flows through it and into Maxwell Creek (Salmon Creek East) which eventually leads to Maxwell Bay and Lake Ontario. The farm has roughly 75 acres of crop production along with a cattle herd., with the primary issues as run-off. A review revealed the three barns did not have working gutters, thus all stormwater dumped directly into the 'barnyard' where cows resided. The area lead to a highly denuded pasture split by the tributary

leading to Maxwell Bay. Contaminated water only had 200' uninhabited path to travel down a sloped contour to the creek. The cows have full time access to the creek. The farm is also within the Karst region, (an area of land made up of limestone ) making the efforts to reduce nutrient loading even more important. The nutrient loading concerns were addressed by implementing two systems. The main system is a Livestock Heavy Use Area practice including a Roof Run-off Structure, Heavy Use Area Protection, a Vegetated Treatment Area, Underground Outlet and Fence. The barnyard area received all water runoff from the nearly 4000 sq. ft. of barn roof. The improvements will not only capture and redirect the water but also improve management of cattle. The 2,000 square feet concrete Heavy Use Area in the barnyard features curbing and buck walls along

with an area for manure stacking for better year round management. Implementation of an appropriately sized VTA (Vegetated Treatment Area) will handle runoff from the barnyard. The underground outlet leading from the roof runoff structures carries the clean water from into the creek. With the implementation of the second system, (Access Control) 600' of exclusionary fencing with the addition of a cattle crossing, the creek's water quality will absolutely improve. Dan Doyle whole heartedly agrees that getting the cows out of the creek and controlling runoff was a necessary improvement, and is committed to maintaining a vegetative buffer along the stream.



Before Implementation



During Implementation



Completed Project with Concrete Heavy Use Area

## AgriChemical Mixing Facility Mitigates Accidental Spills

Bushart Farms is a long-established farm working out of Marion in Wayne County. Growing potatoes and apples, the farm has a varied management style suited to each commodity. The farm was looking to improve their pesticide filling practices and create a more sustainable, efficient process at the same time. Adjacent to the mixing area is a tributary to Maxwell (Salmon East) Creek located less than 650' away from this area. According to the Maxwell Creek Watershed Action Plan, "New York's Lake Ontario coastal waters are a valuable resource for drinking water, recreational boating, fishing and swimming, tourism, and waste water processing, and a key asset in the economic revitalization of upstate New York." A spill would be detrimental to the entire downstream creek, Maxwell Embayment and ultimately Lake Ontario. The Action Plan's Coordinating Committee recommended Nutrient Management BMPs be implemented to limit fertilizer/pesticides with high levels of phosphorous from contaminating nearby waterbodies. Working with the District, through the AEM process and the Grown and Certified Program, Bushart Farms elected to further their conservation efforts and protect their local environment. With the installation of a mixing facility, it not only enhances their environmental goals, based on AEM Tier 2 and 3 assessments, but also improve their business model. A new facility allows the farm to load their sprayers more efficiently,

using less time with a streamlined process and allows them to keep their equipment out of the elements, and prepare them for any new regulations. This project consisted of the implementation of a NRCS standard mixing facility centrally located to serve the farm's nearby orchards and muck fields, that pre-construction had no protection against spills/runoff of chemicals. A 40' x 40' modern facility with a concrete floor atop a catch basin to collect and spilled or excess pesticide or washwater was built. Overhead water was installed for both ease of filling and an extra layer of protection against contamination. The facility also contains a dedicated, locked, storage for any chemicals. The building has containment for runoff and spills from mixing and loading the sprayers. This will be collected and sprayed back onto fields after it becomes inert. The building has overhead water to prevent backflow contamination and a locked area dedicated for pesticide and fertilizer storage. The farm operates year round, producing top quality fruits and vegetables for the local community as well as participating in the New York Grown and Certified program, allowing them to market and sell their product further afield. The building will be directly used when the farm needs to mix, load, and store their pesticides.



Before Implementation



During Implementation



After Implementation

### WHY AEM?

AEM links farmers with local conservation professionals to identify existing environmental stewardship, address natural resource concerns, and enhance farm viability. For qualifying operations, participation in AEM may also help promote farm products through New York State Grown & Certified.

The District's AEM experts can help with:

- farm environmental assessment
- environmental farm plan development
- best management practice design and implementation
- updates to plans and installed practices
- education programs for environmentally sound farming

AEM is a voluntary program led by your local Soil and Water Conservation District with focus on local and watershed-wide environmental concerns, farm-specific conservation practices, and individual farm business objectives. Call Ron Thorn, Ag Field Program Manager



Soil and Water Conservation Committee

Visit [nys-soilandwater.org](https://nys-soilandwater.org)



Agriculture and Markets

### AGRICULTURAL ENVIRONMENTAL MANAGEMENT



AEM are required components for participating in the New York State Grown & Certified Program



This produce was grown right – right here in New York State.

Need Planning Help?

- Non-Point Source Abatement and Control
- Climate Resiliency Farming
- Soil Assessment
- New York State Grown & Certified: Specialty Crop
- Conservation Cover & Soil Health Management

Call Ron  
315-946-7200



# Over 16 Tons Collected

## District Holds Electronics Recycling Event

In December, Wayne County SWCD hosted its first Electronics Recycling event. Being our inaugural program, we decided to limit the program to 250 registrations. All of these spots were filled within ten days, with 1858 items scheduled for drop off. The event was so popular that we immediately began planning the next E-waste collection event for April. For more information regarding future electronic recycling events, and to sign-up to be notified, please visit [www.waynecountyNYsoilandwater.org](http://www.waynecountyNYsoilandwater.org)



# Agriculture Awards

**The Agricultural Environmental Steward:** While not generally members of the ‘production’ farming community, Agricultural Environmental Stewards are individuals who have a passion and commitment to supporting, and improving, Wayne County farms. Past winners have been stalwarts of outreach, pest experts, drainage whizzes, and a host of other things. This year’s winner, Ken Morrison, of Palmyra, has a dedication to his job that is rarely seen. Ken Morrison, of KM Excavating has participated with the District’s Agricultural Drainage program that is co-sponsored with Wayne County. Ken has been a contractor for this program since the late 1980’s. His “can-do” attitude and eagerness to look at a project and determine the best course of action are just a few reasons why Ken was nominated. Whenever shown appreciation on a project, Ken will reply, “I’m just doing my job.”



**YOUNGMAN FARMS**  
Conservation Farm  
of the Year



**KEN MORRISON**  
**KM EXCAVATING**  
Agriculture Environmental Steward



**HUMBERT FARMS**  
**LEOPOLD AWARD**  
Top 4

**Conservation Farm of the Year:** This award goes to a farm that shows significant commitment to farming while managing the environment through operational conservation practices and are at forefront of community wellness with Water Quality protection. Youngman Farms, headed by Shawn & his Dad, Alan, are beef producers in Wolcott, NY. They have participated with Wayne SWCD for over a decade; implementing numerous practices such as cover crops, prescribed grazing, concrete barnyards, erosion control practices, and nutrient management planning into their daily operations – all with the intent of protecting water quality for their community.

**The New York State AEM Conservation Leopold Award:** According to NYS Ag & Markets the intent of this award is, “to honor a farm and its nominating Soil and Water Conservation District for their efforts to promote and protect the environment through the preservation of soil and water quality while helping to ensure farm viability for future generations.” Mark and Lisa Humbert and family have been leading by example and working with industry partners, the Wayne County Soil and Water Conservation District, and USDA-NRCS to advance nutrient management and soil health with their corn, soybean, and wheat crops for years. Buffer strips, cover crops, and reduced tillage all help with their goal of not allowing soil to leave their 3,500 acre farm by air or water. Through these practices, the Humberts’ avoid unnecessary applications of fertilizers, make the most of nutrients and organic matter from manure imported from neighboring farms, bolster soil health, and improve crop yields. The Humberts’ have also hosted several demonstration days and trainings with the District and USDA-NRCS. Their dedication, and participation has earned them the respect for the nomination. They were ranked in the top 4 farms in New York State for conservation innovation.

NYS Grown and Certified helps farms market products produced within New York. As consumers become more educated and continue to make the conscientious decision to purchase locally and environmentally sustainable products, there is a need to increase awareness. To Participate, producers need to show they are involved with the Agricultural Environmental Management program (AEM) , as well as provide proof their product originates in New York. Participation in the program provides the farm with use of the Grown & Certified Logo. For any questions on requirements or what the AEM program, or learn more it has to offer please call us at 315-946-7200.



Williams Cattle, Marion NY  
is a proud participant in NYS  
Grown and Certified  
& Certified program

# FARMERS

GREAT PLAINS MODEL 1006MT

## Seeder / Tiller Drill Rental

The drill has a planting width of 18' with 7" row spacing

**Rent the Seeder / Tiller Drill**  
**\$15/ Acre + \$50 Set Up Fee**  
**315-946-7200**



# Conservation Education

## Wayne County Envirothon



If your high school would like to participate in the 2023 Envirothon, we are always looking for more teams! Please contact our office at 315-946-7200

2022 saw a return to many in-person events, and our Envirothon competition was no different. After taking a year off in 2020 and participating in an online competition in 2021, we were finally able to reconvene similarly to pre-covid years. In April, familiar faces from Red Creek helped welcome new teams from East Palmyra Christian School and Weedsport High. Blue Cut Nature Center in Lyons provided the venue, and we'd like to thank Wayne County Parks for helping dig the soils pit! In addition to that station, teams were quizzed on their knowledge of Aquatic Biology, Forestry, Wildlife Science, and the current issue: Waste Management. Red Creek Rams took first place, followed by Weedsport and EPCS.

Conservation Education at a young age helps students understand and appreciate the natural resources -- and learn how to conserve those resources for future generations. Through educational experiences, like Envirothon, students realize how natural resources and ecosystems affect each other and how resources can be used wisely. This early education, helps to develop the critical thinking skills they need to understand the complexities of ecological problems. Conservation Education also encourages youth to act on their own to conserve natural resources and use them in a responsible manner by making informed decisions. Source: [fs.usda.gov](https://fs.usda.gov)

## 4 H Youth Camp, Habitat Boxes to Fisheries Conservation



In 2022, Ian Prestly and Maxine Appleby taught 4H campers about bluebirds and their habitats. About 60 campers in two sessions build nesting boxes. They learned they can find bluebirds in open country with patchy vegetation and large trees and in nest boxes. Campers got to take their nest boxes home after taking a pledge to place the nesting box in a location around their home. In another session, the NYS Department of Conservation wardens visited the camp. Participants learned that fishing isn't just about catching fish. Conservation wardens also told them about the many calls they receive such as the one that came in about a snapping turtle. Campers got to go fishing. Everyone caught a fish!



## 2022 Great Lakes Watershed Clean-up and Earth Day Celebration



48 members of the Ontario - Walworth & Sodus Rotary Clubs, Neighborhood Association of Sodus Point (NASP), and the Wayne County Soil & Water Conservation District partnered on Earth Day weekend, for a clean up at Sodus Point Beach and Camp Beachwood (West).



## Wayne County Youth Fishing Derby

Over 225 Fish Caught in 2022  
125 Anglers Registered



This Derby is the highlight of the year for Wayne County Youth, starting at age 4. Anglers win prizes & trophies. Each year there is an awards ceremony.

**EVERYONE IS A WINNER**



<https://waynecountynysoilandwater.org/youth-derby/>

### Thank you!

This annual summer family activity could not happen without community support. Volunteers and donations provide tackle boxes, youth trophies and other items to make for success event.

### Thank You 2022 Donors:

Nancy Wilkes of McDonalds, Lyons National Bank, Humbert Farms, Joey's Northside Grocery, Captain Jack's- Cornerstone Realty Associates, Dynalec Corporation, Termatec Molding, V&C Development, Johnson Forest Management - Dates Excavating, Fishin' Magician Charters, Paton's Sodus Market, Bill Paton, David & Sue Williamson, Lake Breeze Fruit Farms, Ashley Insurance, Torque Auto Sodus, KC Bailey Orchards, Sodus Bay Outfitters, PJ's Unisex Salon, Mack's Body Shop, Finger Lakes Aquaculture, Franklin House Tavern, Plano Fishing, Frabill, Tim Thomas, Walmart, Rubino's on the Bay, Katlynn Marine, Farm Bureau of Wayne County, Fowler Marina, Reclaimed Maddness, Sodus Bay Sportsmen Club, JJ's Dog House, Hughes Marina, Grantley Bait & Tackle, Jarvis Bait Farm, Davenport's Livery, Bay Bridge Bait, Krenzer Marina, Country Max Palmyra, Wayne County Tourism, Pop's Country House Collectibles, Mama's Boyz Cafe, Wayne County Soil & Water Conservation District, Wayne County Federation of Sportsmen's Clubs

If you would like to volunteer or donate?  
contact: [lindsey@wayneNYswcd.org](mailto:lindsey@wayneNYswcd.org)



### SUMMER OUTDOOR FUN FOR THE KIDS

June 16th - July 28th, 2023 AGES 4-16

Wayne County Soil & Water Conservation District & Wayne County Federation of Sportsmen's Clubs

Registration opens June 1, 2023

FISH THE WATERS OF WAYNE COUNTY

**\$5.00**

**3 TOURNAMENTS**

IN ONE **BIG** DERBY

WAYNE COUNTY

