

PROPOSED

PORT BAY BARRIER BAR

REHABILITATION AND PIER CONSTRUCTION

TOWNS OF HURON AND WOLCOTT

WAYNE COUNTY, NEW YORK

PROJECT CONTACTS

CIVIL ENGINEER

BERGMANN ASSOCIATES  
280 EAST BROAD STREET, SUITE 200  
ROCHESTER, NY  
TIPHAIN KETCH, PE, CFM  
585.498.7762

CONSULTING ENGINEER

JM DAVIDSON  
525 WHEATFIELD STREET, SUITE 20  
WHEATFIELD, NY  
KRISTA GREER, PE, CFM  
716.453.1646

CLIENT

WAYNE COUNTY SOIL & WATER CONSERVATION DISTRICT  
7312 ROUTE 31  
LYONS, NY  
LINDSEY M. GERSTENSLAGER, MS  
315.946.7200

JURISDICTIONAL CONTACTS AND STAKEHOLDERS

PLANNING AND ZONING

CITY/TOWNSHIP NAME  
1234 ANYTOWN DR  
ANYTOWN, NY XXXXX  
CONTACT NAME  
CONTACT NUMBER

PORT BAY IMPROVEMENT ASSOCIATION

JURISDICTIONAL NAME  
1234 ANYTOWN DR  
ANYTOWN, NY XXXXX  
CONTACT NAME  
CONTACT NUMBER

STORM WATER AND SOIL EROSION AND SEDIMENTATION

JURISDICTIONAL NAME  
1234 ANYTOWN DR  
ANYTOWN, NY XXXXX  
CONTACT NAME  
CONTACT NUMBER

ROADS & ENTRANCE

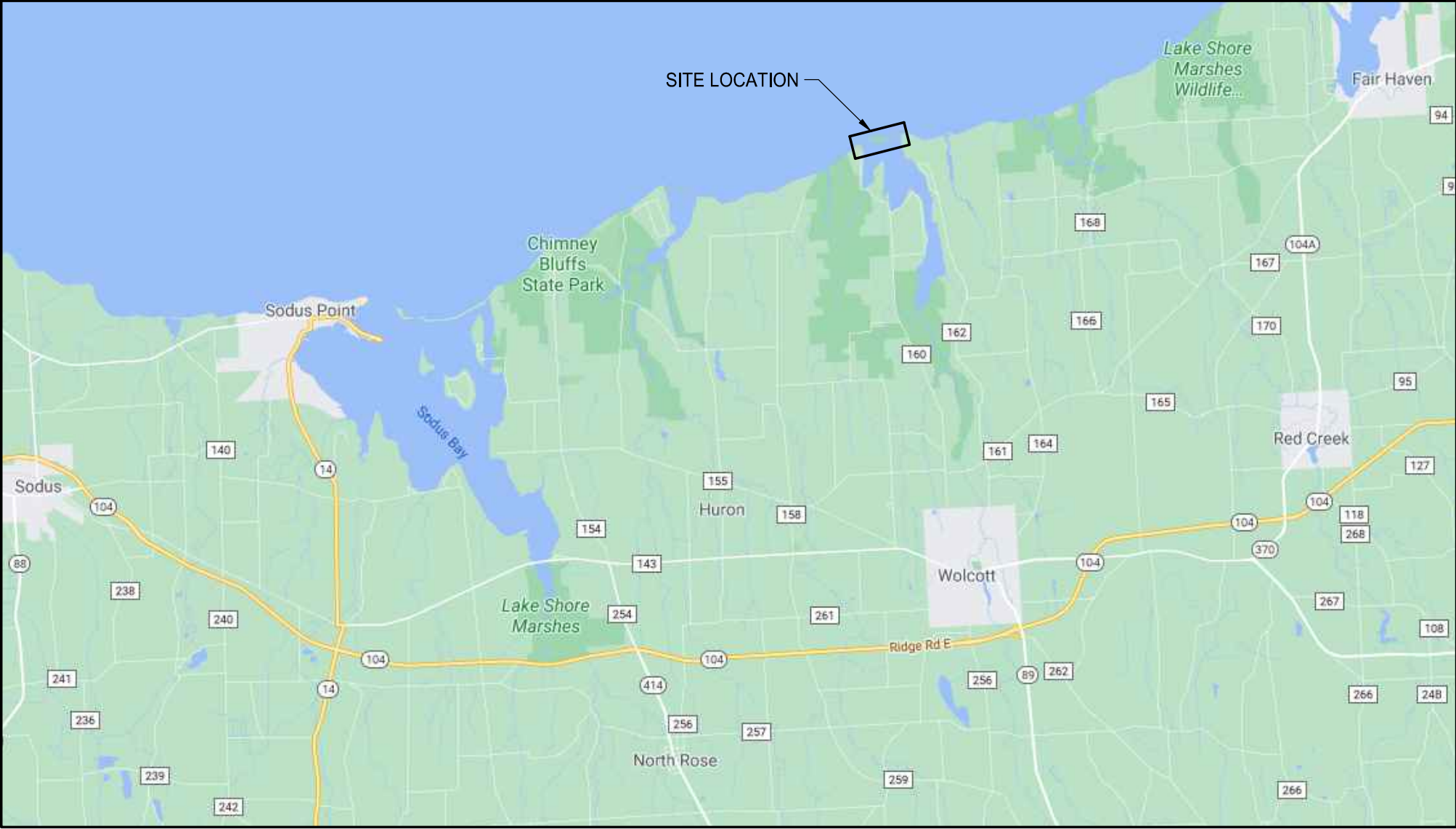
JURISDICTIONAL NAME  
1234 ANYTOWN DR  
ANYTOWN, NY XXXXX  
CONTACT NAME  
CONTACT NUMBER

ELECTRIC

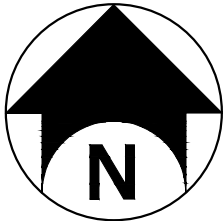
JURISDICTIONAL NAME  
1234 ANYTOWN DR  
ANYTOWN, NY XXXXX  
CONTACT NAME  
CONTACT NUMBER

GAS

JURISDICTIONAL NAME  
1234 ANYTOWN DR  
ANYTOWN, NY XXXXX  
CONTACT NAME  
CONTACT NUMBER



SITE LOCATION MAP  
NOT TO SCALE



DRAWING INDEX

DRAWING NO.	DRAWING TITLE	SHEET NO.
-------------	---------------	-----------

PORT BAY  
BARRIER BAR

SHORELINE REHABILITATION  
AND PIER REPLACEMENT



Wayne County Soil & Water  
Conservation District  
73312 Rt. 21  
Lyons, NY 14489



Bergmann Associates, Architects, Engineers,  
Landscape Architects & Surveyors, D.P.C.

280 East Broad Street  
Suite 200  
Rochester, NY 14604

office: 585.232.5135  
fax: 585.232.4652

www.bergmannpc.com

DATE	DESCRIPTION
------	-------------



Not For  
Construction

Copyright © Bergmann Associates, Architects, Engineers,  
Landscape Architects & Surveyors, D.P.C.

Note:  
Unauthorized alteration or addition to this drawing is a violation of  
the New York State Education Law Article 145, Section 7209.

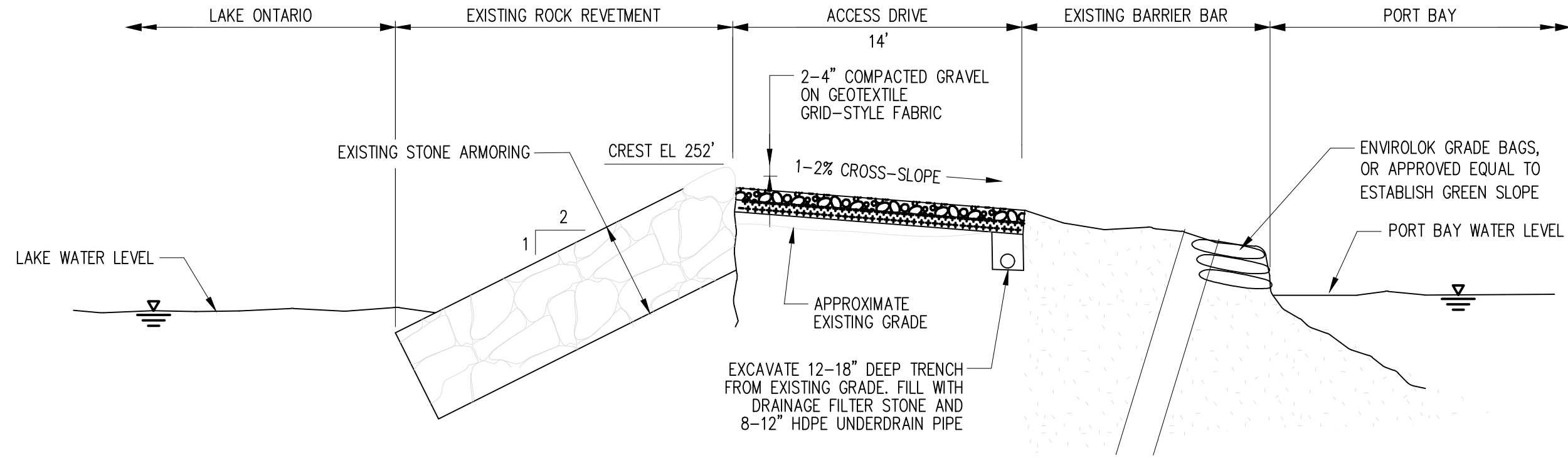
Project Manager: <b>T. KETCH</b>	Checked By: <b>T. KETCH / J. REPP</b>
Designed By: <b>C. O'CONNELL</b>	Drawn By: <b>T. BURKE / B. GEORGE</b>
Date: 9/7/2021	Project Number: <b>014801.00</b>

COVER SHEET

Drawing Number:

C000

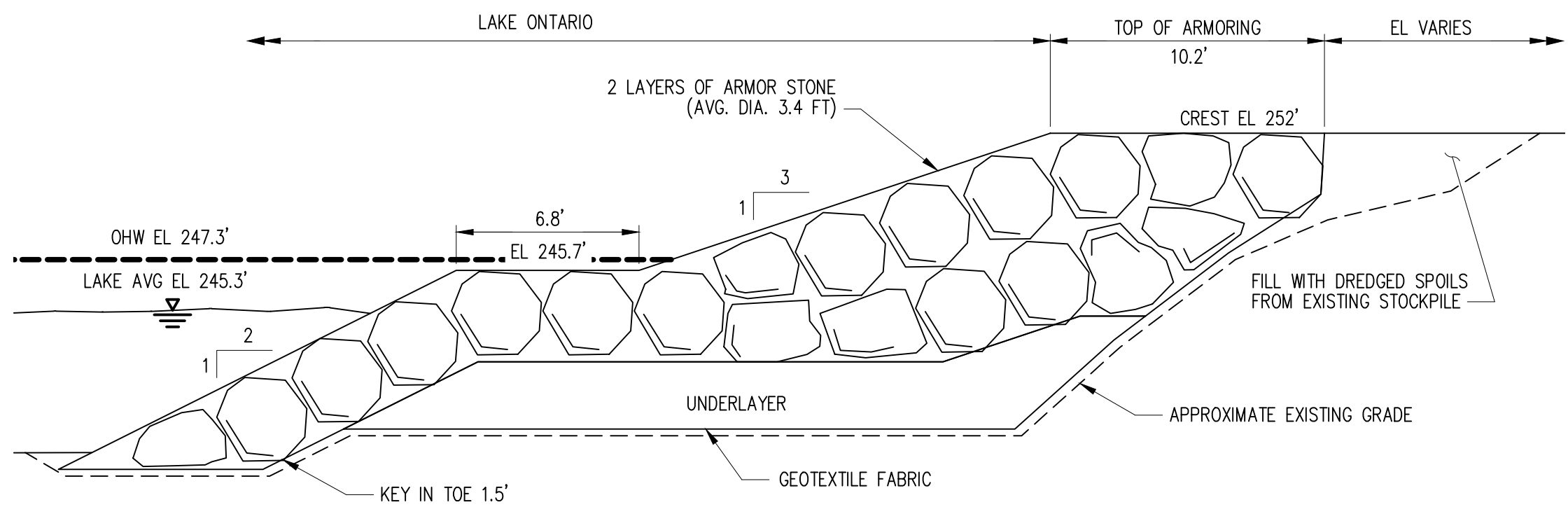




2 ROADWAY SECTION, STA 0+00 TO 9+00  
SCALE: NOT TO SCALE

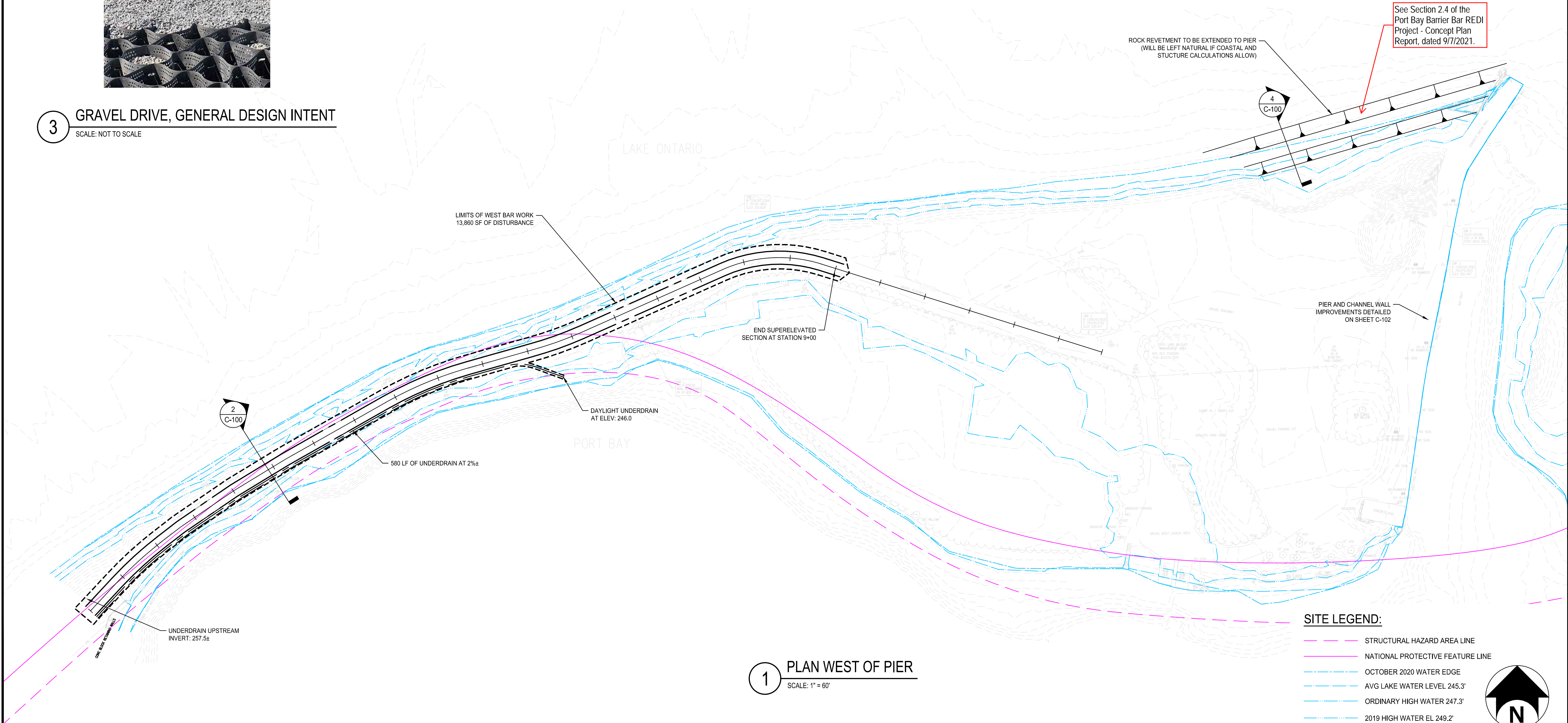


3 GRAVEL DRIVE, GENERAL DESIGN INTENT  
SCALE: NOT TO SCALE



4 STONE ARMORING AND FILL SECTION  
SCALE: NOT TO SCALE

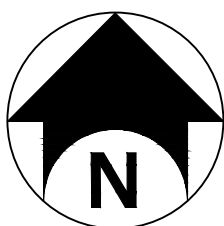
NOTE:  
ARMOR STONE 2T - 4.5T  
UNDERLAYER: 270 LB - 900 LB



1 PLAN WEST OF PIER  
SCALE: 1" = 60'

SITE LEGEND:

- STRUCTURAL HAZARD AREA LINE
- NATIONAL PROTECTIVE FEATURE LINE
- OCTOBER 2020 WATER EDGE
- AVG LAKE WATER LEVEL 245.3'
- ORDINARY HIGH WATER 247.3'
- 2019 HIGH WATER EL 249.2'



# PORT BAY BARRIER BAR

SHORELINE REHABILITATION  
AND PIER REPLACEMENT



Wayne County Soil & Water  
Conservation District  
73312 Rt. 21  
Lyons, NY 14489

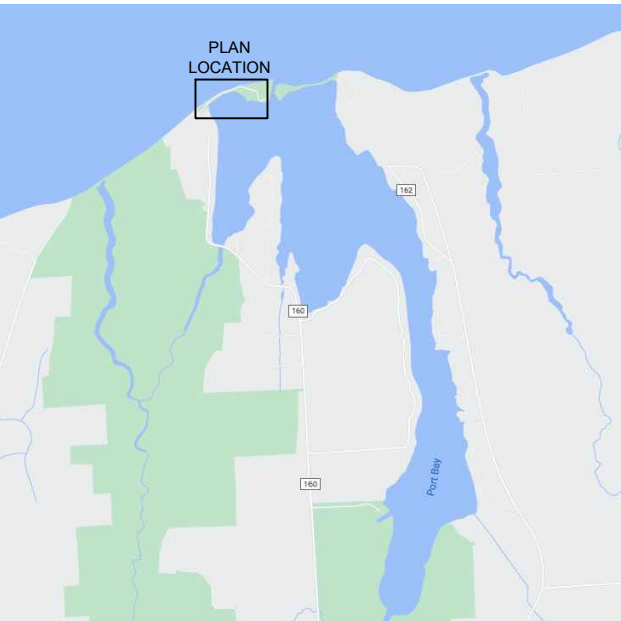


Bergmann Associates, Architects, Engineers,  
Landscape Architects & Surveyors, D.P.C.  
280 East Broad Street  
Suite 200  
Rochester, NY 14604

office: 585.232.5135  
fax: 585.232.4652

www.bergmannpc.com

DATE	DESCRIPTION
------	-------------



Not For  
Construction

Copyright © Bergmann Associates, Architects, Engineers,  
Landscape Architects & Surveyors, D.P.C.

Note:  
Unauthorized alteration or addition to this drawing is a violation of  
the New York State Education Law Article 145, Section 7209.

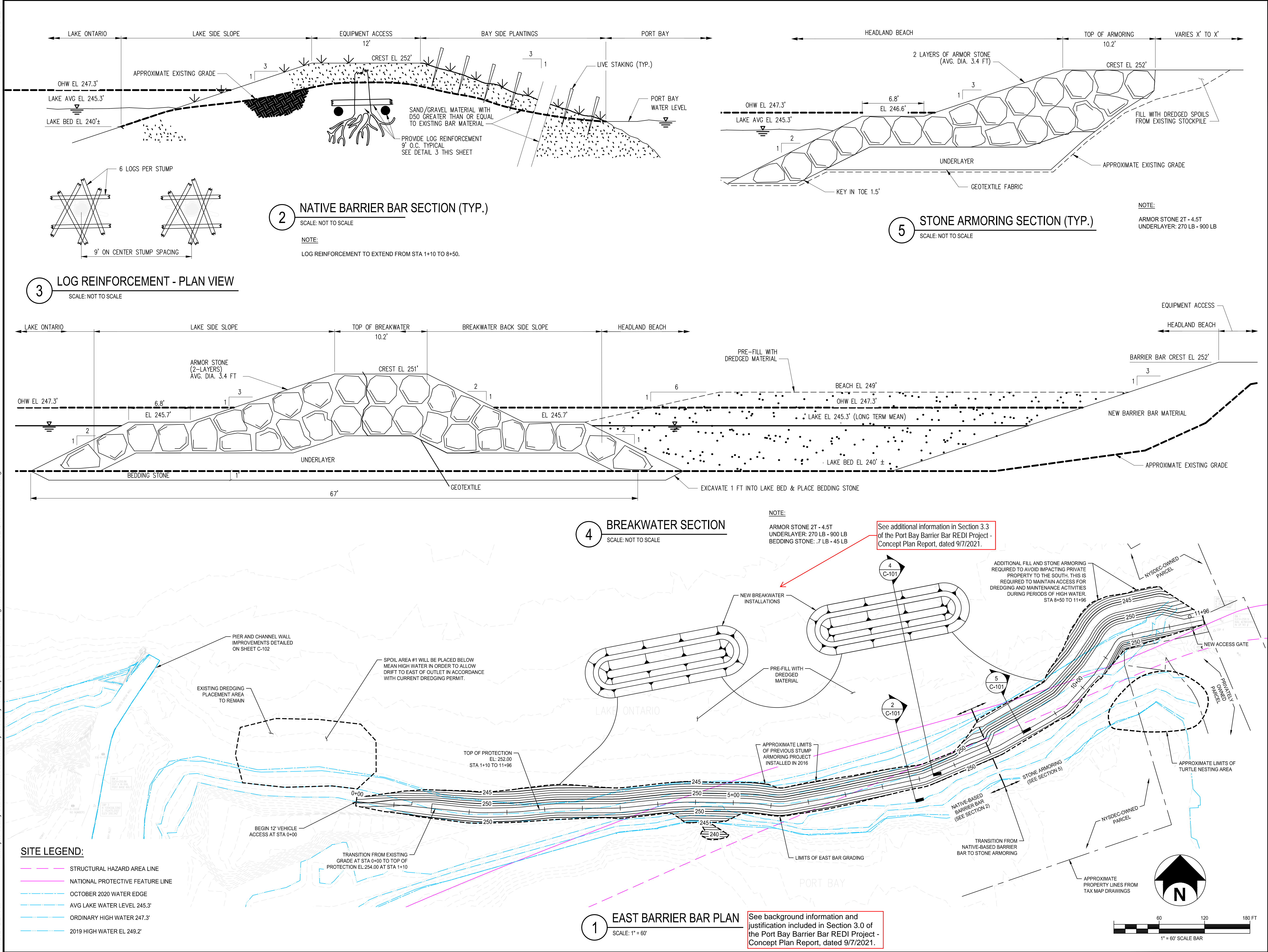
Project Manager: <b>T. KETCH</b>	Checked By: <b>T. KETCH / J. REPP</b>
Designed By: <b>C. O'CONNELL</b>	Drawn By: <b>T. BURKE / B. GEORGE</b>
Date: <b>9/7/2021</b>	Project Number: <b>014801.00</b>

WEST BAR  
CONSTRUCTION

Drawing Number:

C100





# PORT BAY BARRIER BAR

SHORELINE REHABILITATION AND PIER REPLACEMENT



Wayne County Soil & Water Conservation District  
73312 Rt. 21  
Lyons, NY 14489



Bergmann Associates, Architects, Engineers, Landscape Architects & Surveyors, D.P.C.  
280 East Broad Street  
Suite 200  
Rochester, NY 14604  
office: 585.232.5135  
fax: 585.232.4652

www.bergmannpc.com

DATE	DESCRIPTION
------	-------------



Not For Construction

Copyright © Bergmann Associates, Architects, Engineers, Landscape Architects & Surveyors, D.P.C.

Note: Unauthorized alteration or addition to this drawing is a violation of the New York State Education Law Article 145, Section 7209.

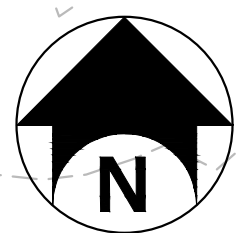
Project Manager: <b>T. KETCH</b>	Checked By: <b>T. KETCH / J. REPP</b>
Designed By: <b>C. O'CONNELL</b>	Drawn By: <b>T. BURKE / B. GEORGE</b>
Date: <b>9/7/2021</b>	Project Number: <b>014801.00</b>

EAST BAR CONSTRUCTION

Drawing Number:

C101



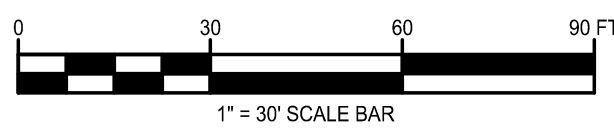


Temporary/Movable Deflector Wall possible in this area. In place during navigation season only. More information in Section 2.2.2 of the Port Bay Barrier Bar REDI Project - Concept Plan Report, dated 9/7/2021.

See additional information in Section 2.2 of the Port Bay Barrier Bar REDI Project - Concept Plan Report, dated 9/7/2021.

See additional information in Section 2.5.2 of the Port Bay Barrier Bar REDI Project - Concept Plan Report, dated 9/7/2021.

# 1 PIER AND INLET WORK ITEMS PLAN

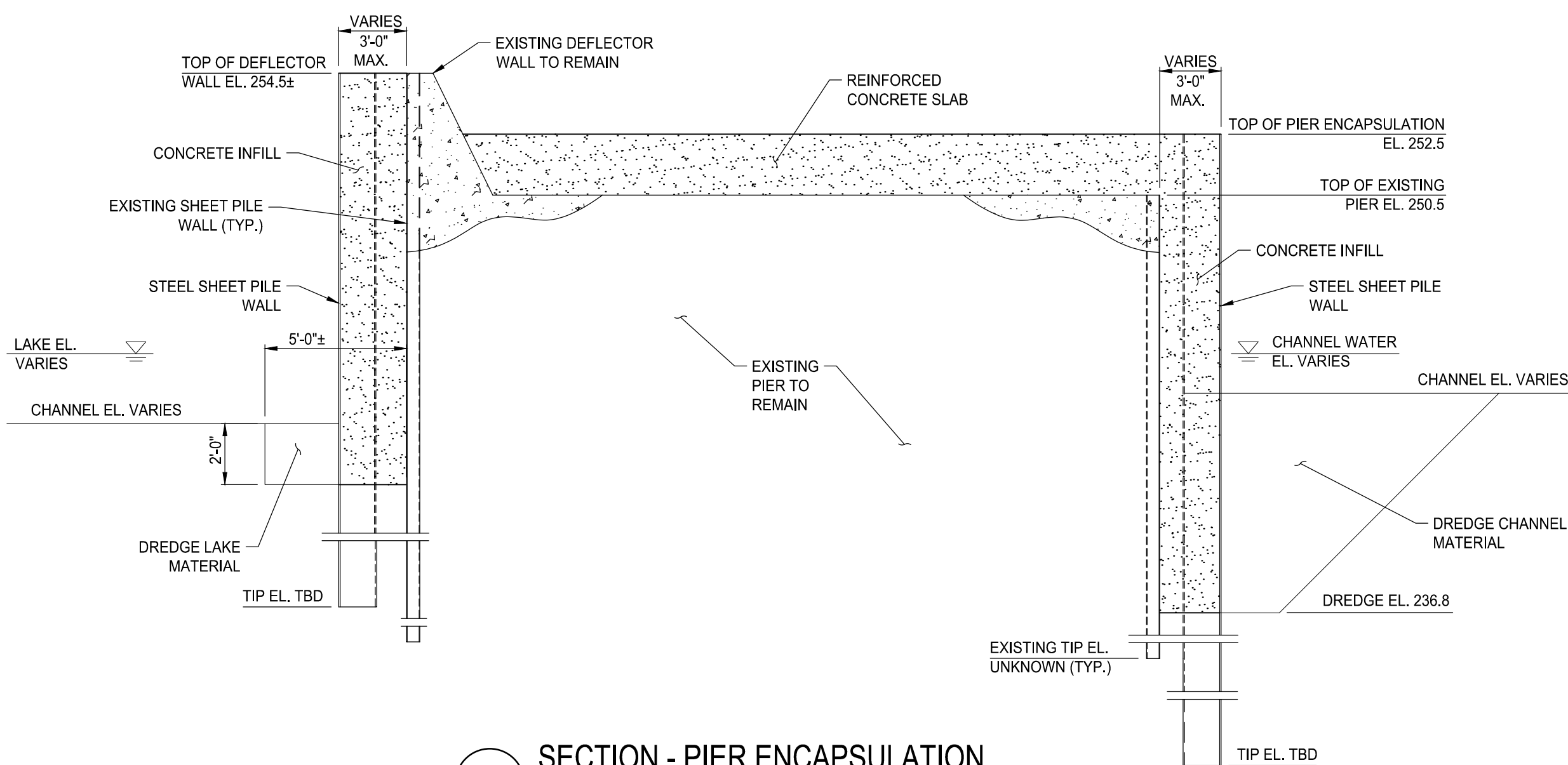


## PIER AND INLET WORK ITEMS LIST

- 1 PLACE SHEET PILE WALL AND ENCAPSULATE PIER
- 2 CONSTRUCT EXTENDED DEFLECTOR WALL
- 3 PLACE NEW ANCHORED SHEET PILE INLET WALL
- 4 REMOVE EXISTING SHEET PILE WALL, TIE-RODS, AND ANCHOR BLOCK
- 5 PLACE NEW ANCHORED SHEET PILE INLET RETURN WALL AT SOUTH END
- 6 RELOCATE DREDGE PILE
- 7 REMOVE CONCRETE PAD
- 8 PLACE STONE FILL AT SOUTH END

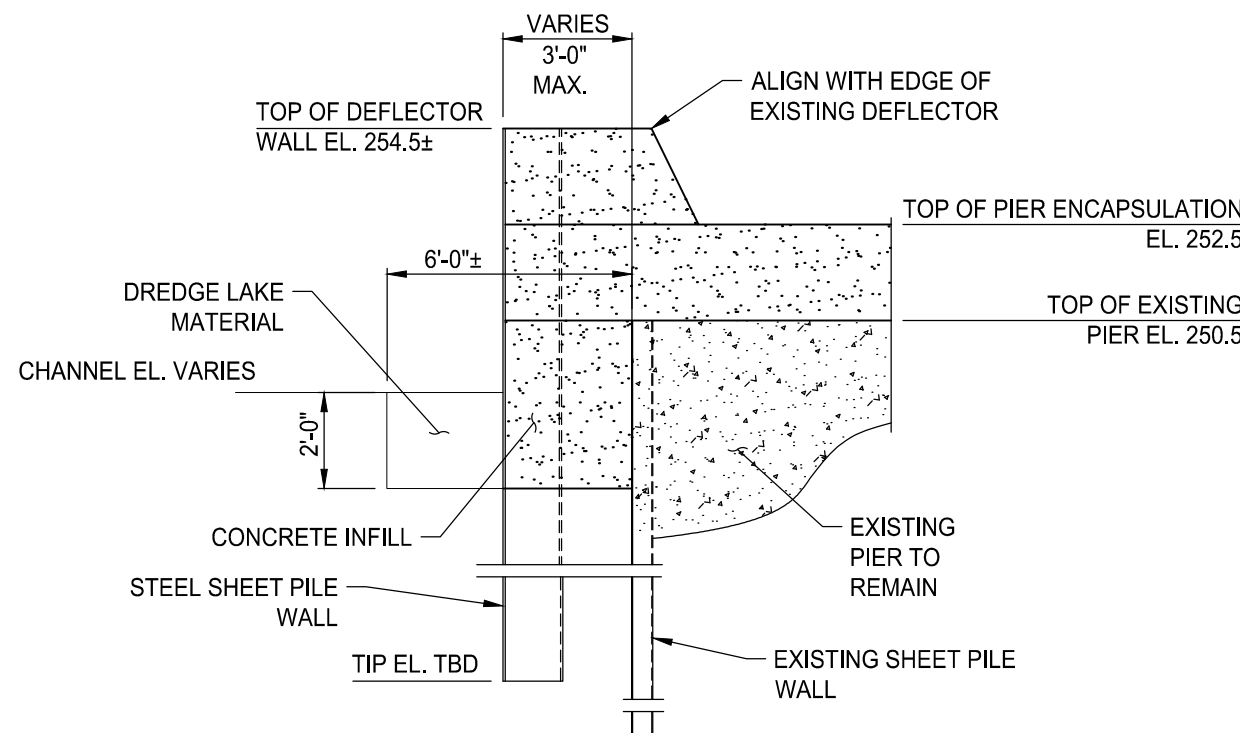
SECTION - PIER ENCAPSULATION

SCALE:  $\frac{1}{4}" = 1'-0"$   
NOTE: REINFORCEMENT NOT SHOWN



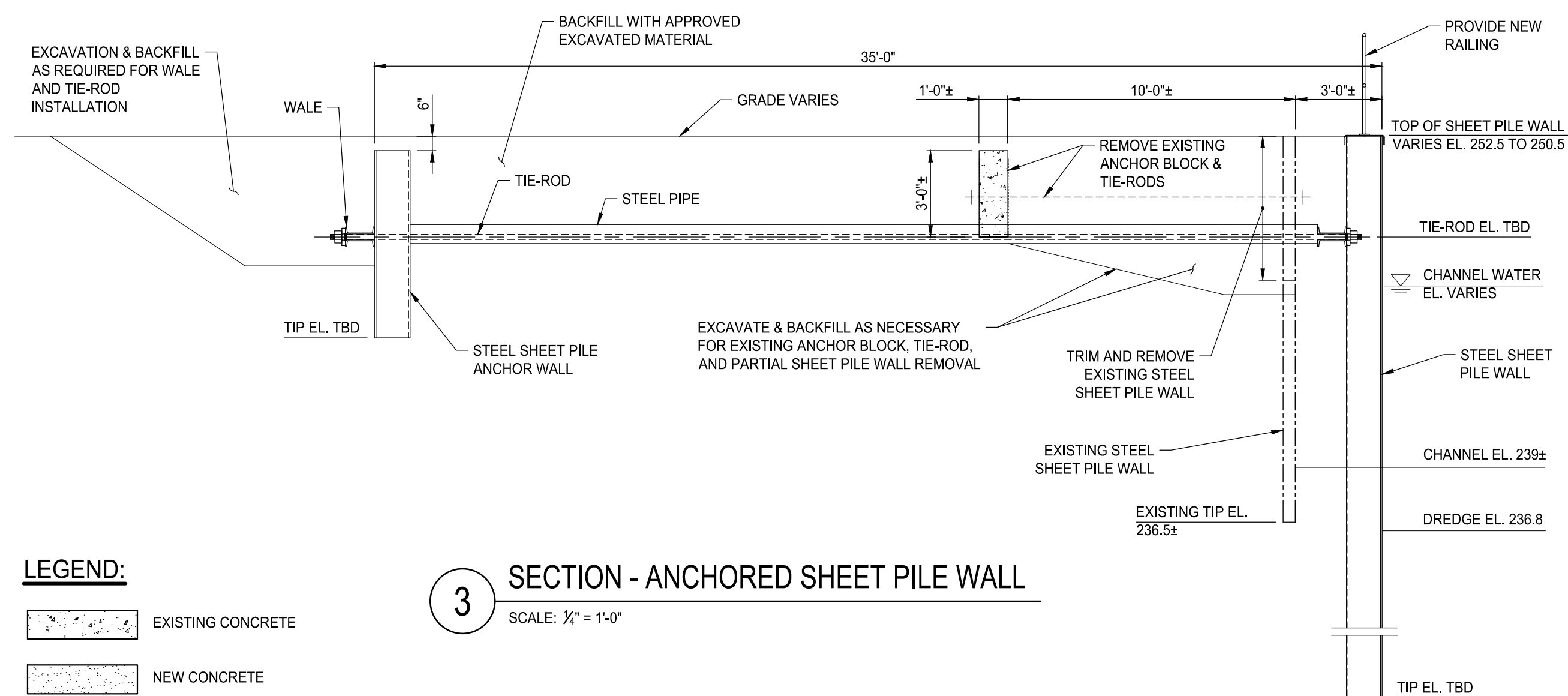
## SECTION - NEW DEFLECTOR WALL

SCALE:  $\frac{1}{4}" = 1'-0"$   
NOTE: REINFORCEMENT NOT SHOWN



## SECTION - ANCHORED SHEET PILE WALL

SCALE:  $\frac{1}{4}" = 1'-0"$



LEGEND:

- EXISTING CONCRETE
- NEW CONCRETE
- RIPRAP

# PORT BAY BARRIER BAR

## SHORELINE REHABILITATION AND PIER REPLACEMENT



Wayne County Soil & Water  
Conservation District  
73312 Rt. 21  
Lyons, NY 14489



Bergmann Associates, Architects, Engineers,  
Landscape Architects & Surveyors, D.P.C.  
280 East Broad Street  
Suite 200  
Rochester, NY 14604

office: 585.232.5135  
fax: 585.232.4652

www.bergmannpc.com

DATE	DESCRIPTION
------	-------------



**Not For Construction**

Copyright © Bergmann Associates, Architects, Engineers,  
Landscape Architects & Surveyors, D.P.C.

Note:  
Unauthorized alteration or addition to this drawing is a violation of  
the New York State Education Law Article 145, Section 7209.

Project Manager: <b>T. KETCH</b>	Checked By: <b>T. KETCH / J. REPP</b>
Designed By: <b>D. GUETTA</b>	Drawn By: <b>S. SULTANA</b>
Date Issued: <b>9/7/2021</b>	Project Number: <b>014801.00</b>

## PIER AND INLET CONSTRUCTION

Drawing Number

# C102