

Agricultural and Farmland Protection Plan for Wayne County

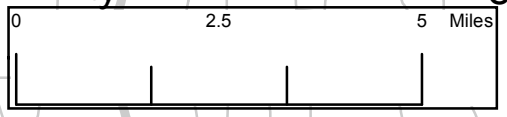
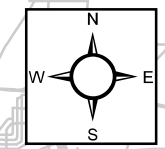
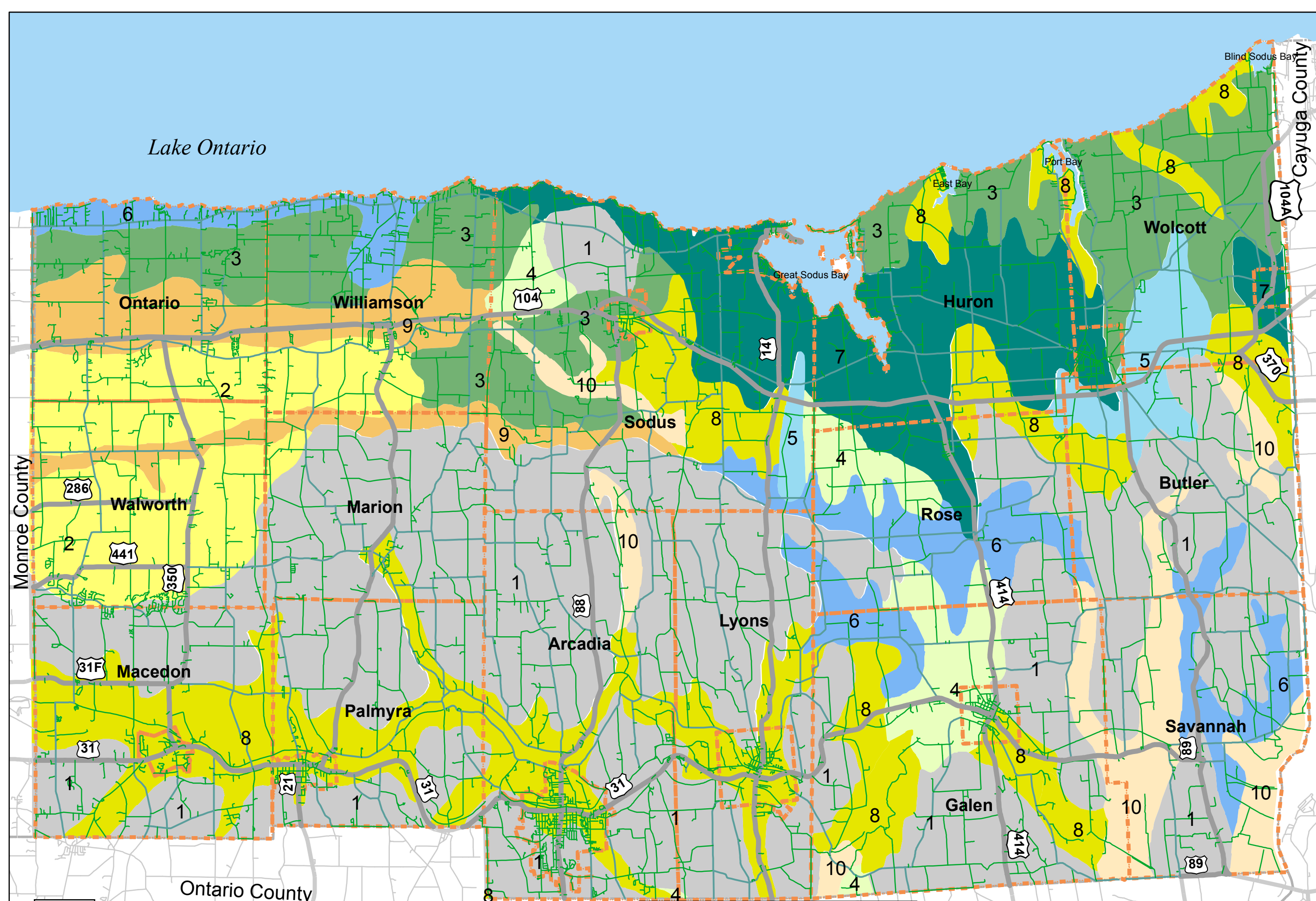
General Soil Series-

- 1 Kendaia - The Kendaia series consists of very deep, somewhat poorly drained soils formed in calcareous till. They are nearly level to sloping soils on footslopes and other moderately low areas on till plains.
 - 2 Madrid - The Madrid series consists of very deep, well drained soils. They formed in loamy deposits derived mainly from sandstone, limestone and granite on till plains and moraines. Permeability is moderate or moderately slow in the solum and moderately slow.
 - 3 Sodus - The Sodus series consists of deep, well drained soils on uplands. They are nearly level to very steep slowly permeable soils that formed in firm basal till dominated by red and gray sandstone.
 - 4 Lamson - The Lamson series consists of very deep, poorly drained and very poorly drained soils formed in glaciofluvial, glacio-lacustrine and deltaic deposits. They are level and nearly level soils in low areas on glacial lake plains.
 - 5 Lima - The Lima series consists of very deep, moderately well drained soils on till plains. They are nearly level to moderately steep soils formed in till that is strongly influenced by limestone and calcareous shale.
 - 6 Niagara - The Niagara series consists of very deep, somewhat poorly drained soils formed in silty glacio-lacustrine deposits. These soils are in level to slightly concave areas on lake plains and in valleys.
 - 7 Rushford - The Rushford series consists of very deep, moderately well drained soils formed in a thin mantle of till underlain with silty lacustrine deposits. These soils contain a dense fragipan. They are on elevated lake plains and end moraines.
 - 8 Wayland - The Wayland series consists of very deep, poorly drained and very poorly drained, nearly level soils formed in recent alluvium. These soils are in low areas or slackwater areas on flood plains.
 - 9 Wassaic - The Wassaic series consists of moderately deep, well drained soils formed in loamy till. They are on bedrock controlled till plains. Bedrock is at depths of 20 to 40 inches.
 - 10 Palms - The Palms series consist of very deep, very poorly drained soils formed in herbaceous organic material 16 to 51 inches thick and the underlying loamy deposits in closed depressions on moraines, lake plains, till plains, outwash plains, and hillside seep areas, and on backswamps of flood plains.
- Municipal Boundaries

MAP NO. 1

Prepared by:
Wayne County Planning

November, 2010










Purpose:
These data provide information about soil features on or near the surface of the Earth. Data were collected as part of the National Cooperative Soil Survey. These data are intended for geographic display and analysis at the state, regional, and national level. The data should be displayed and analyzed at scales appropriate for : 250,000-scale data.

Source: SSA Name: United States; SSA Version: 2;
SSA Version Est.: 7/6/2006;
Spatial Format: ArcView Shapefile;
Coordinate System: Geographic Coordinate System (NAD83)
Title: Digital General Soil Map of U.S.
Originator: U.S.D.A., Natural Resources Conservation Service

**Agricultural and
Farmland Protection
Plan for
Wayne County**

**Prime and Unique
Farmland**

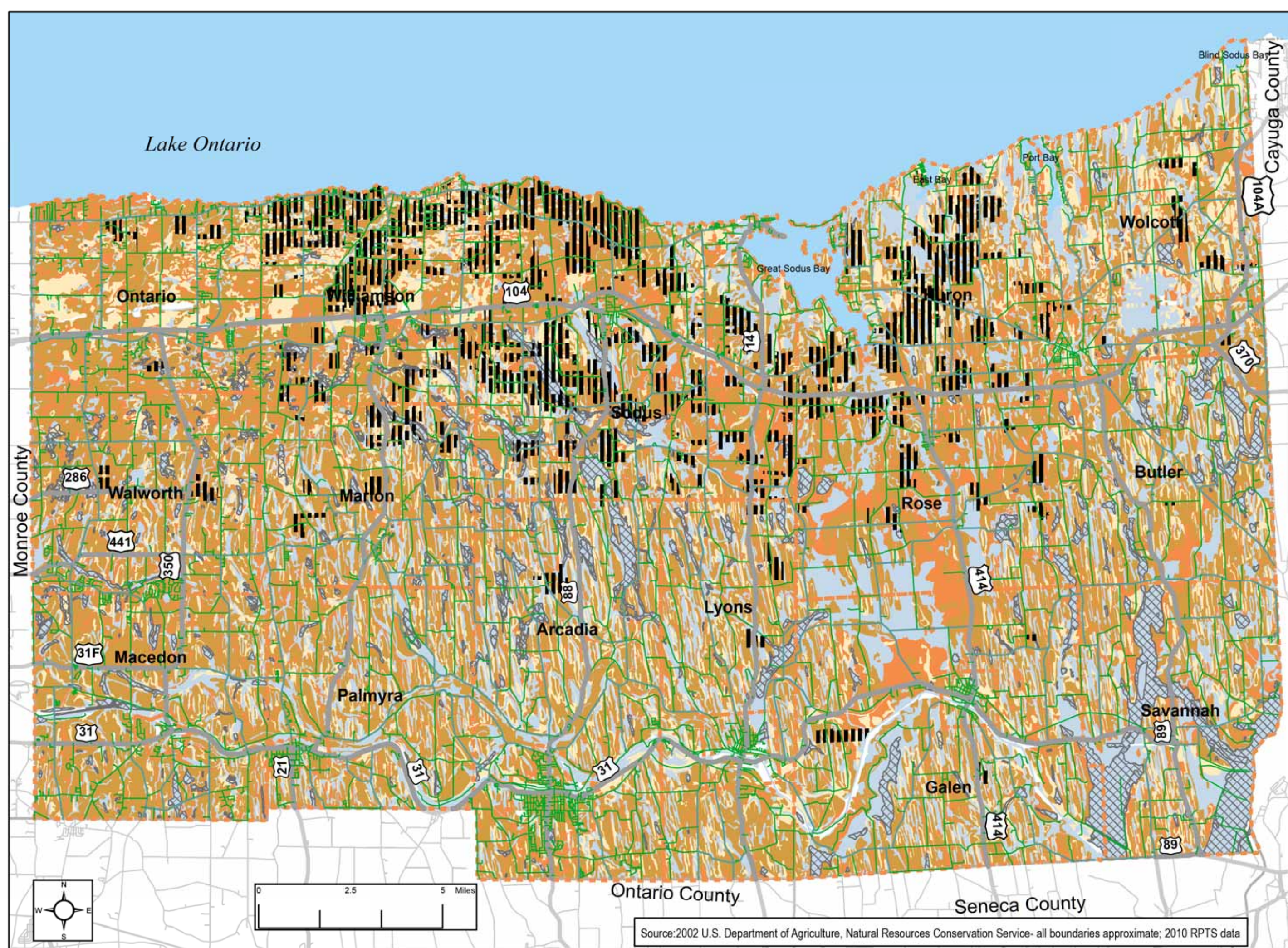
Legend

-  Fruit Parcels
-  Muck Soils
-  All areas Prime farmland
-  Statewide importance
-  Prime farmland if drained
-  Not prime farmland
-  Municipal Boundaries

**MAP
NO. 2**

Prepared by:
Wayne County Planning

November, 2010



Source: 2002 U.S. Department of Agriculture, Natural Resources Conservation Service- all boundaries approximate; 2010 RPTS data

Agricultural and Farmland Protection Plan for Wayne County

Generalized Zoning

Legend

County zoning

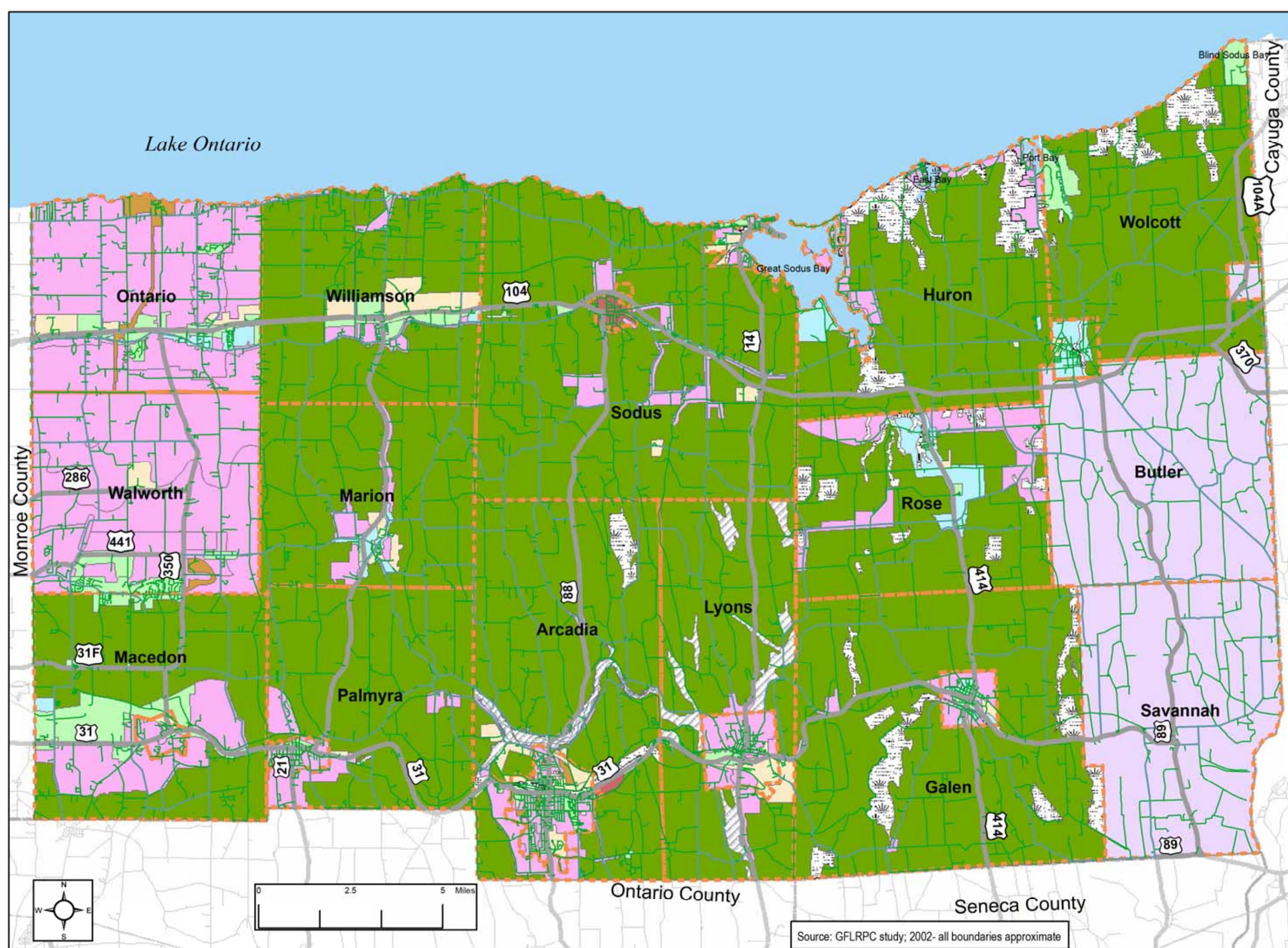
Zone Definition

- Agricultural; Ag/Residential
- Commercial/Industrial;
- Data Not Available
- Higher Density Residential
- Industrial
- Lower Density Residential
- No Zoning/ Open Zone
- Open Space
- Public Services/ Utilities
- Water Bodies/Flood Zones
- Municipal Boundaries

MAP NO. 3

Prepared by:
Wayne County Planning

November, 2010



Source: GFLRPC study; 2002- all boundaries approximate

**Agricultural and
Farmland Protection
Plan for
Wayne County**

**Agricultural
District No. 1**

NYS Certified Ag District
includes parcels added
March, 2009 under 303-b

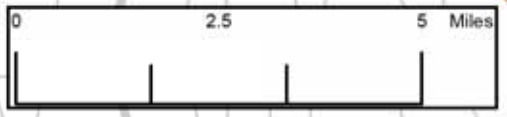
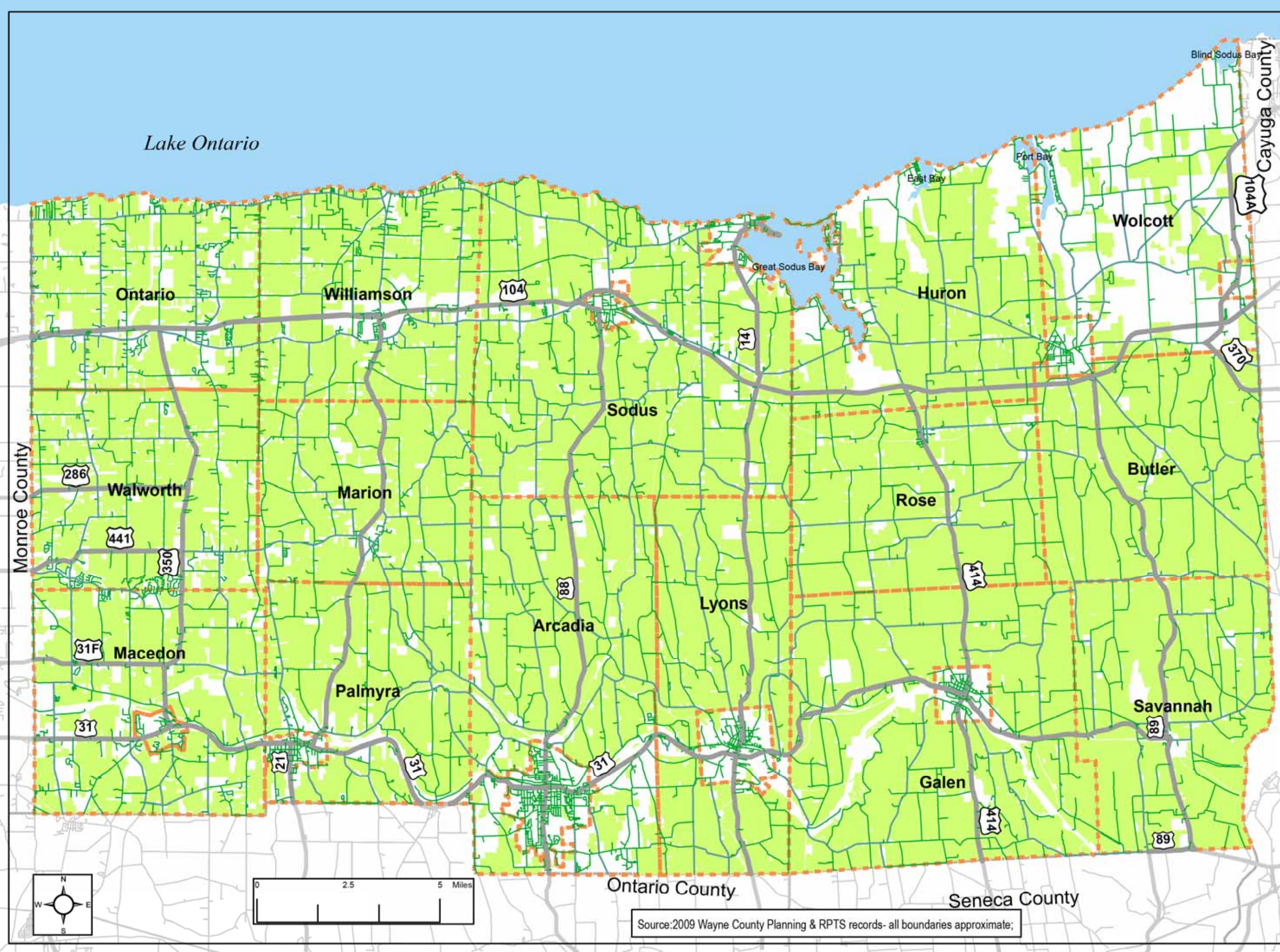
Legend

-  Agricultural District #1
-  Municipal Boundaries

**MAP
NO. 4**

Prepared by:
Wayne County Planning

November, 2010



Source: 2009 Wayne County Planning & RPTS records- all boundaries approximate;



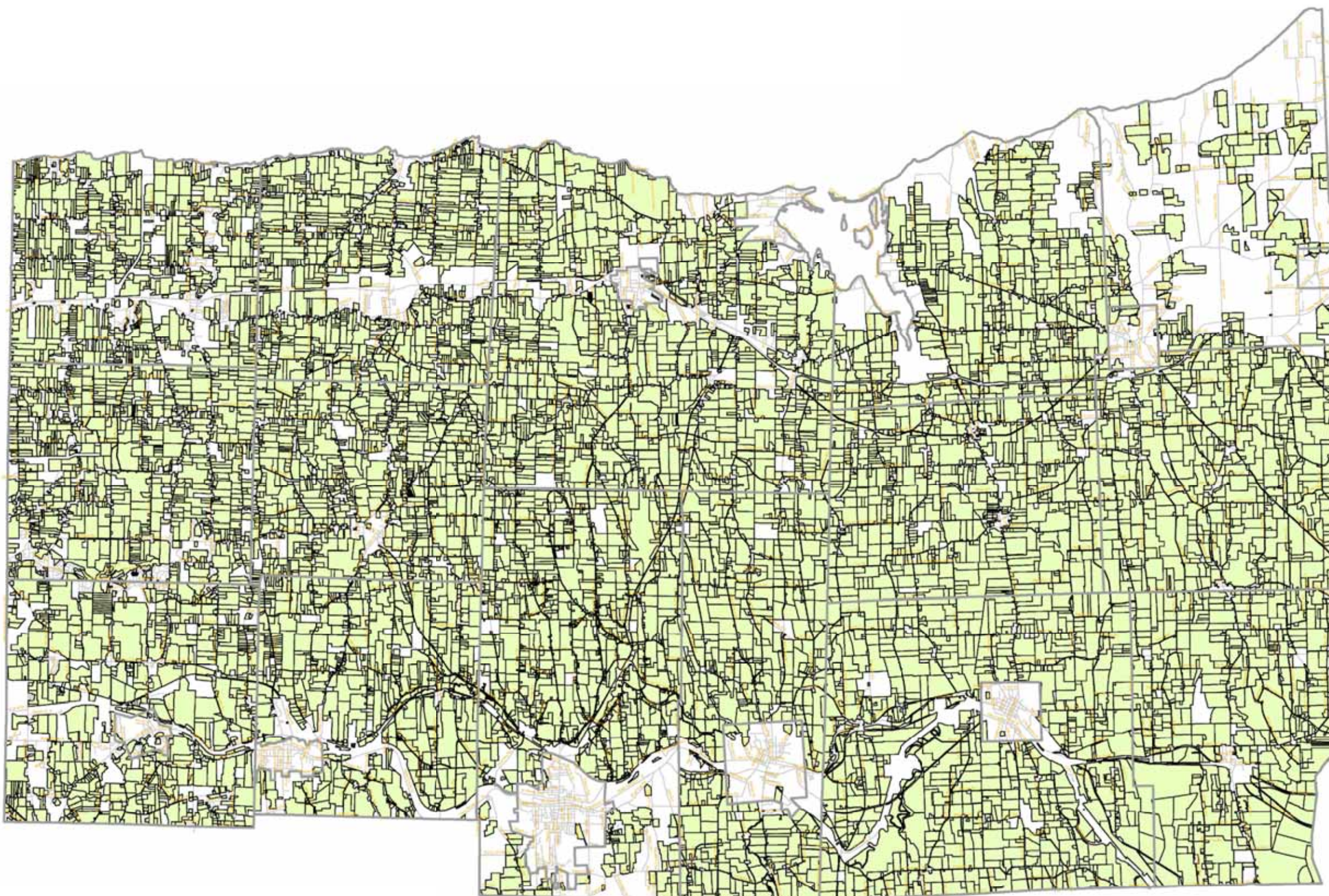
WAYNE COUNTY PLANNING DEPARTMENT

9 PEARL STREET
LYONS, NY 14489

Telephone: (315) 946-5919

Facsimile: (315) 946-7657

www.co.wayne.ny.us/Departments/planningdept/planningdept.htm



The Wayne County Agricultural District No. 1

in all the Towns of Wayne County
the Towns of:

Arcadia, Butler, Galen, Huron, Lyons,
Macedon, Marion, Ontario, Palmyra, Rose,
Savannah, Sodus, Walworth, Williamson and Wolcott
Includes parcels added under 303-b on March 17, 2009

The next District Review will occur in 2016. Parcels that are part of a farming operation may be enrolled in the Ag District during January of each year. Contact Wayne County Planning for more information.

MAP LEGEND

1998 NYS DOT
Raster Quadrangles:
Fairhaven; Fairport;
Furnaceville; Lyons;
Macedon; Montezuma;
Newark; NineMile;
NWolcott; Ontario;
Palmyra; Pultneyville;
Rose; Salmon Creek;
Savannah; Sodus Point

SOURCES:

BASE MAP:
New York State Department of Transportation
Raster Quadrangles .
Geo-registered digitally scanned at 400 dpi.
Parcel Boundaries: Polygons provided by
Wayne County Real PropertyTax
Department March, 20, 2008

Countywide Agricultural District



2 1 0 2 4 Miles

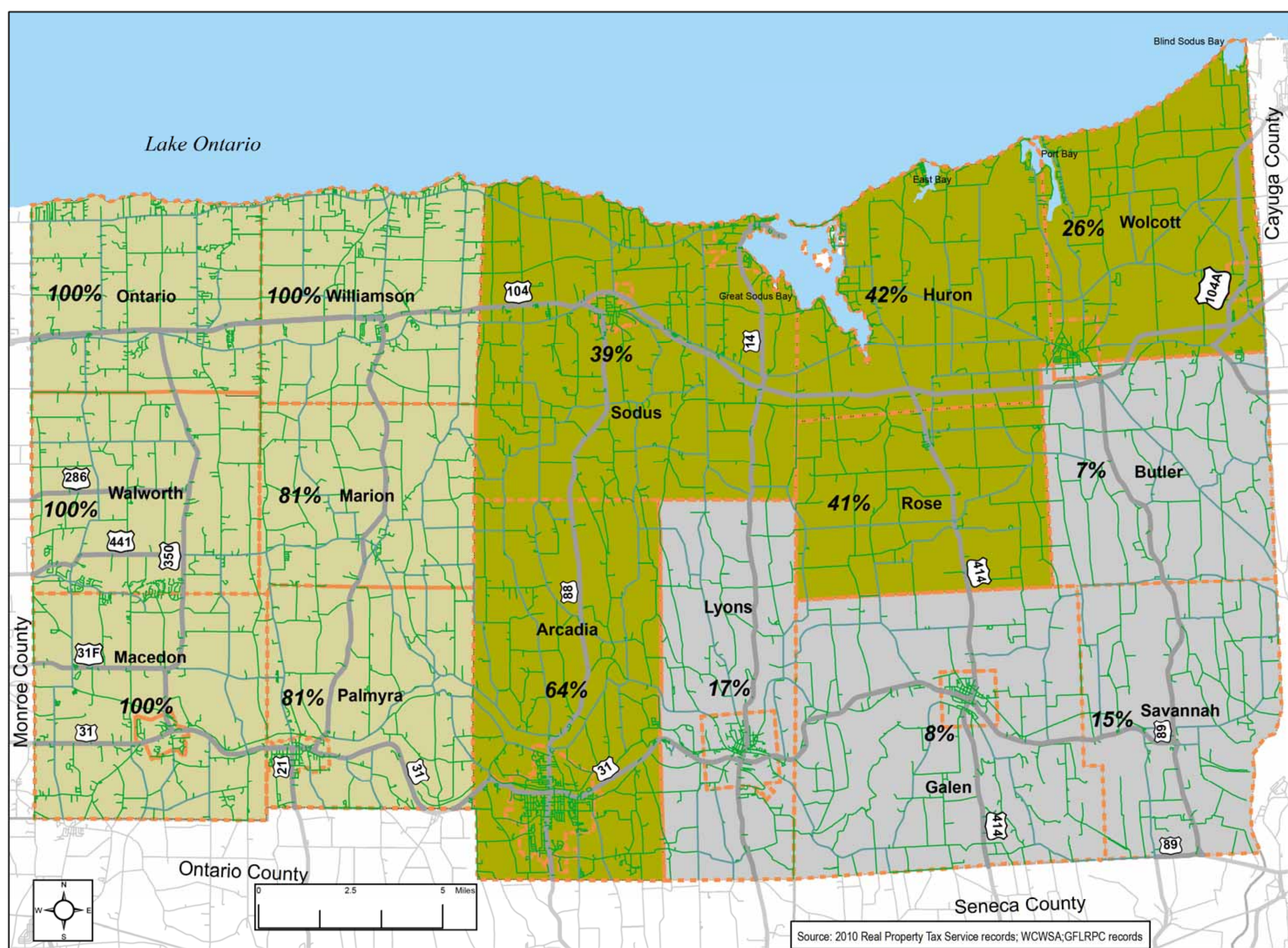
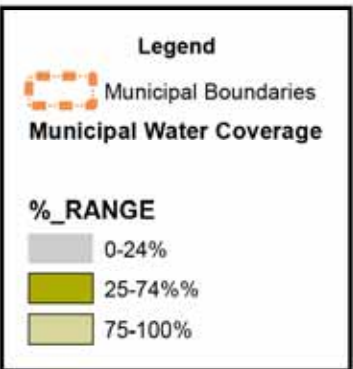


This map was created by the Wayne County Planning Department in May, 2009

Agricultural and Farmland Protection Plan for Wayne County

Development Infrastructure

(estimated percentage of property with municipal water)

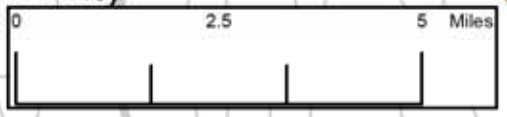
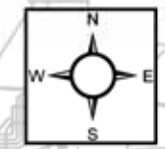


MAP NO. 5

Prepared by:
Wayne County Planning

November, 2010

Source: 2010 Real Property Tax Service records; WCWSA;GFLRPC records



**Agricultural and
Farmland Protection
Plan for
Wayne County**

**Development
Infrastructure**

(estimated location of
municipal water and sewer)

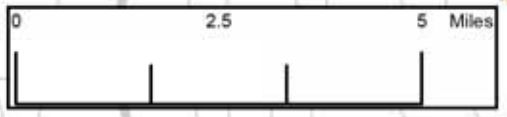
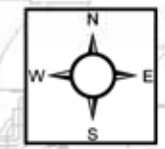
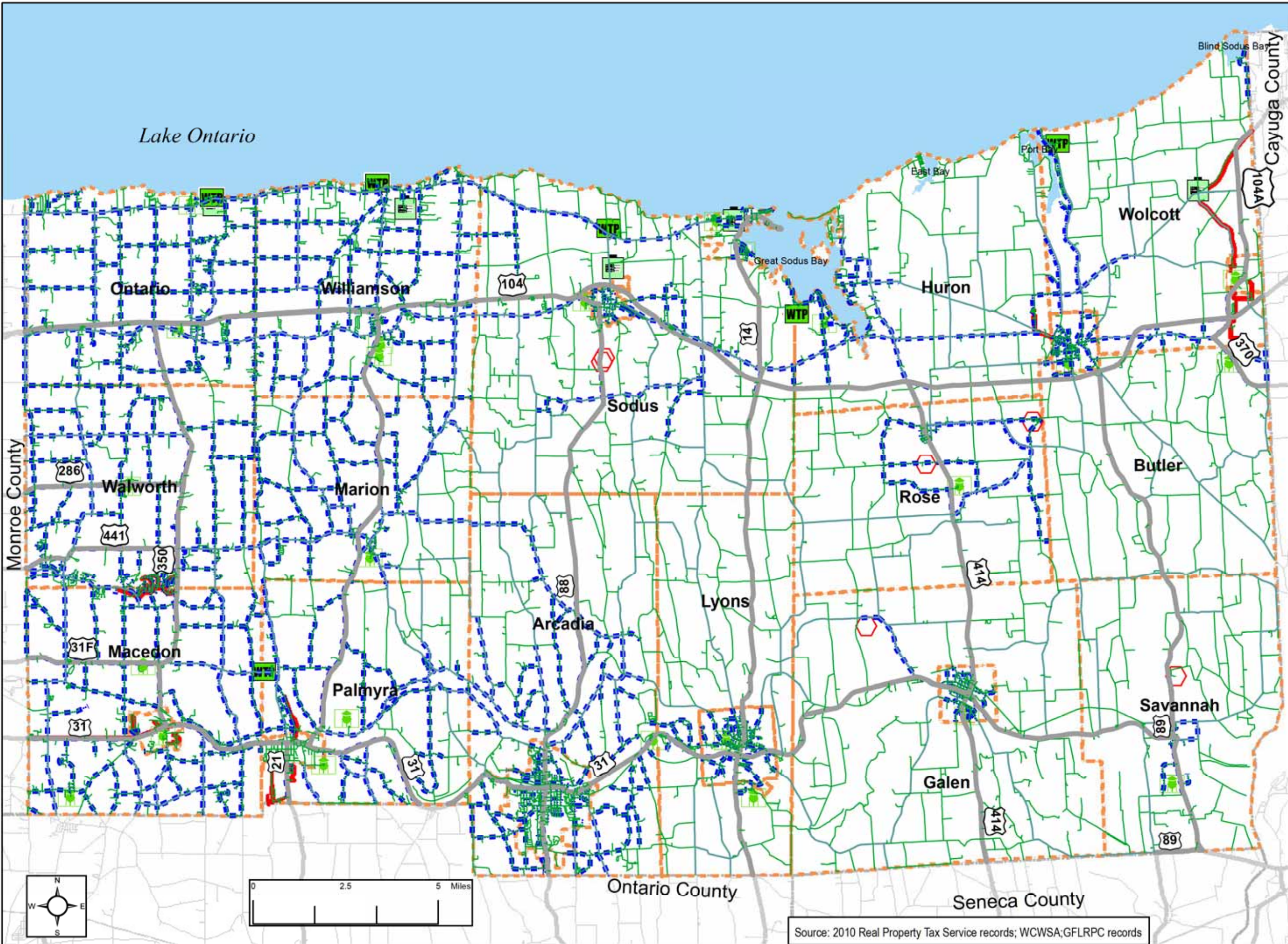
Legend

-  Est. Locations Waterline
-  Water Treatment Plant
-  Water Storage Tank
-  Municipal Well
-  WasteTreatmentPlant
-  Sanitary Sewer Pipe
-  Municipal Boundaries

**MAP
NO. 6**

Prepared by:
Wayne County Planning

November, 2010



Source: 2010 Real Property Tax Service records; WCWSA;GFLRPC records

**Agricultural and
Farmland Protection
Plan for
Wayne County**

**Non-Farm
Residential &
Built-up Areas**

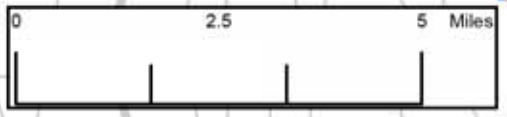
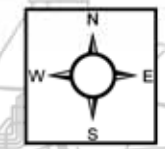
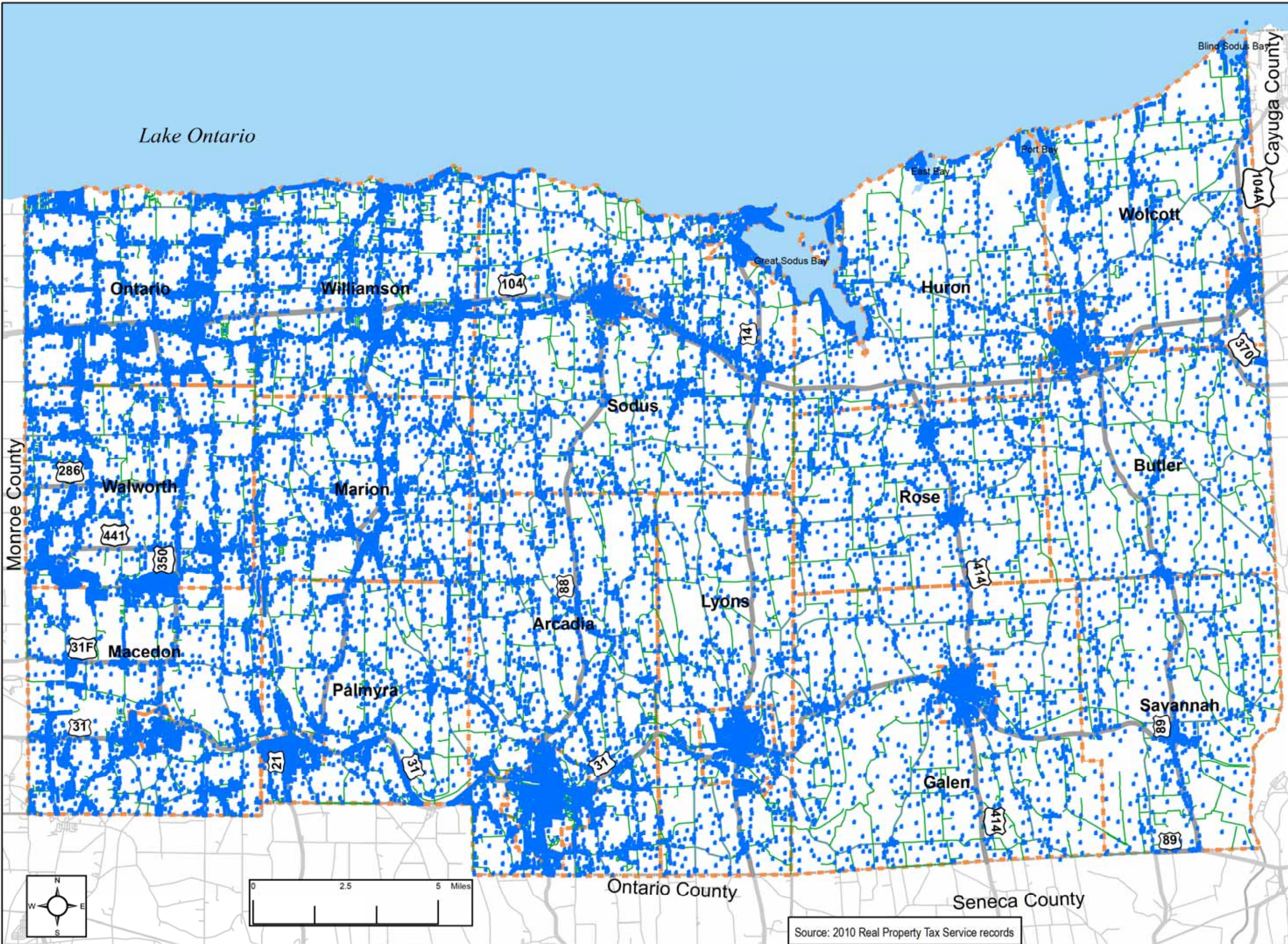
Legend

- Residential Properties (RPTS 200)
- Municipal Boundaries

**MAP
NO. 7**

Prepared by:
Wayne County Planning

November, 2010



Source: 2010 Real Property Tax Service records

**Agricultural and
Farmland Protection
Plan for
Wayne County**

Active Farmland

(receiving Ag Exemption)

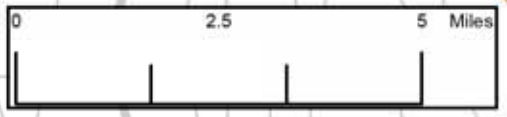
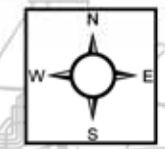
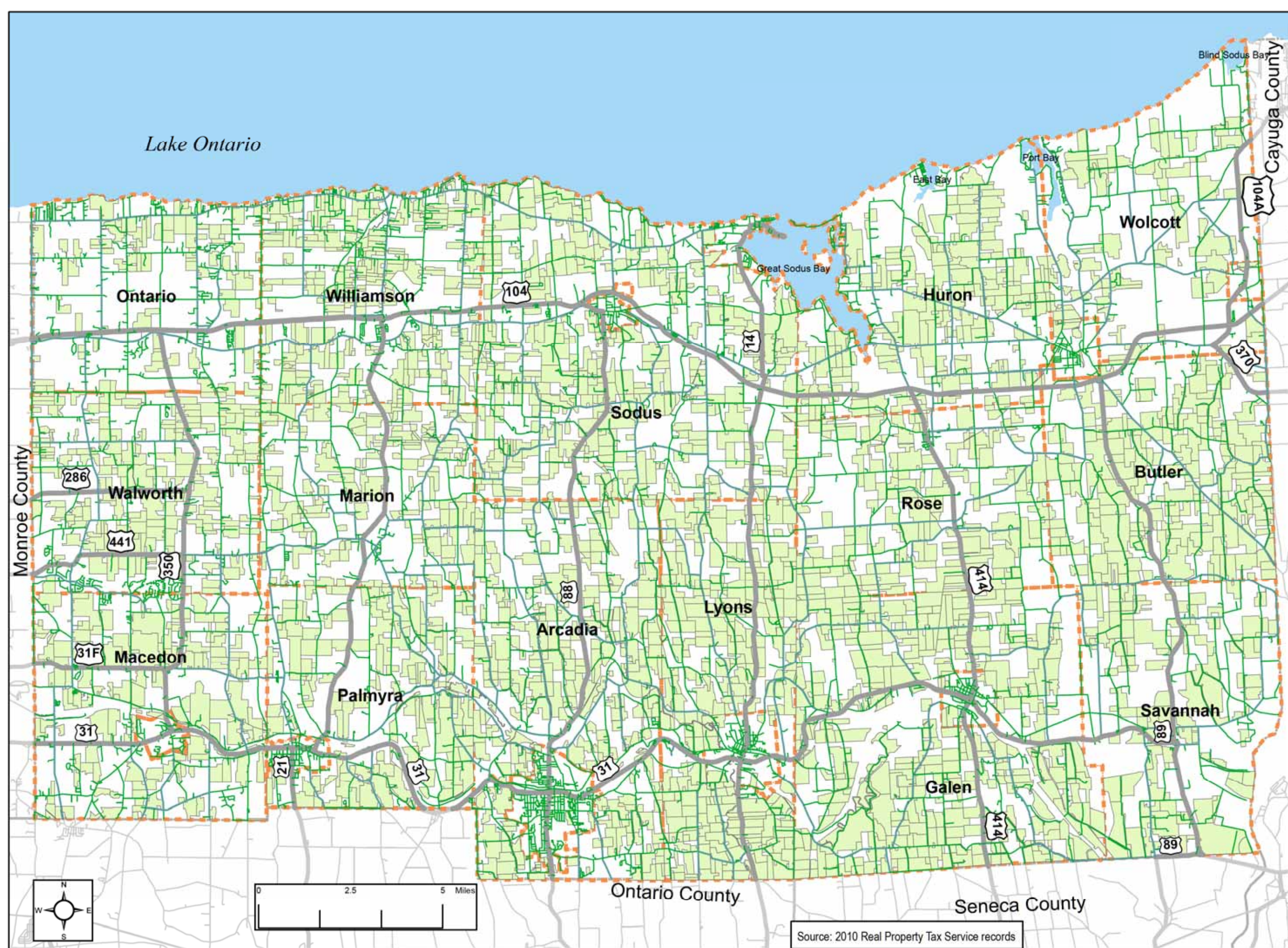
Legend

- Active Farmland
- Municipal Boundaries

**MAP
NO. 8**

Prepared by:
Wayne County Planning

November, 2010



Source: 2010 Real Property Tax Service records

**Agricultural and
Farmland Protection
Plan for
Wayne County**

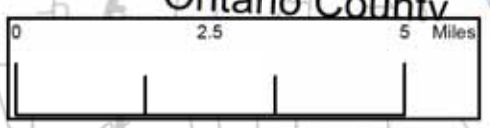
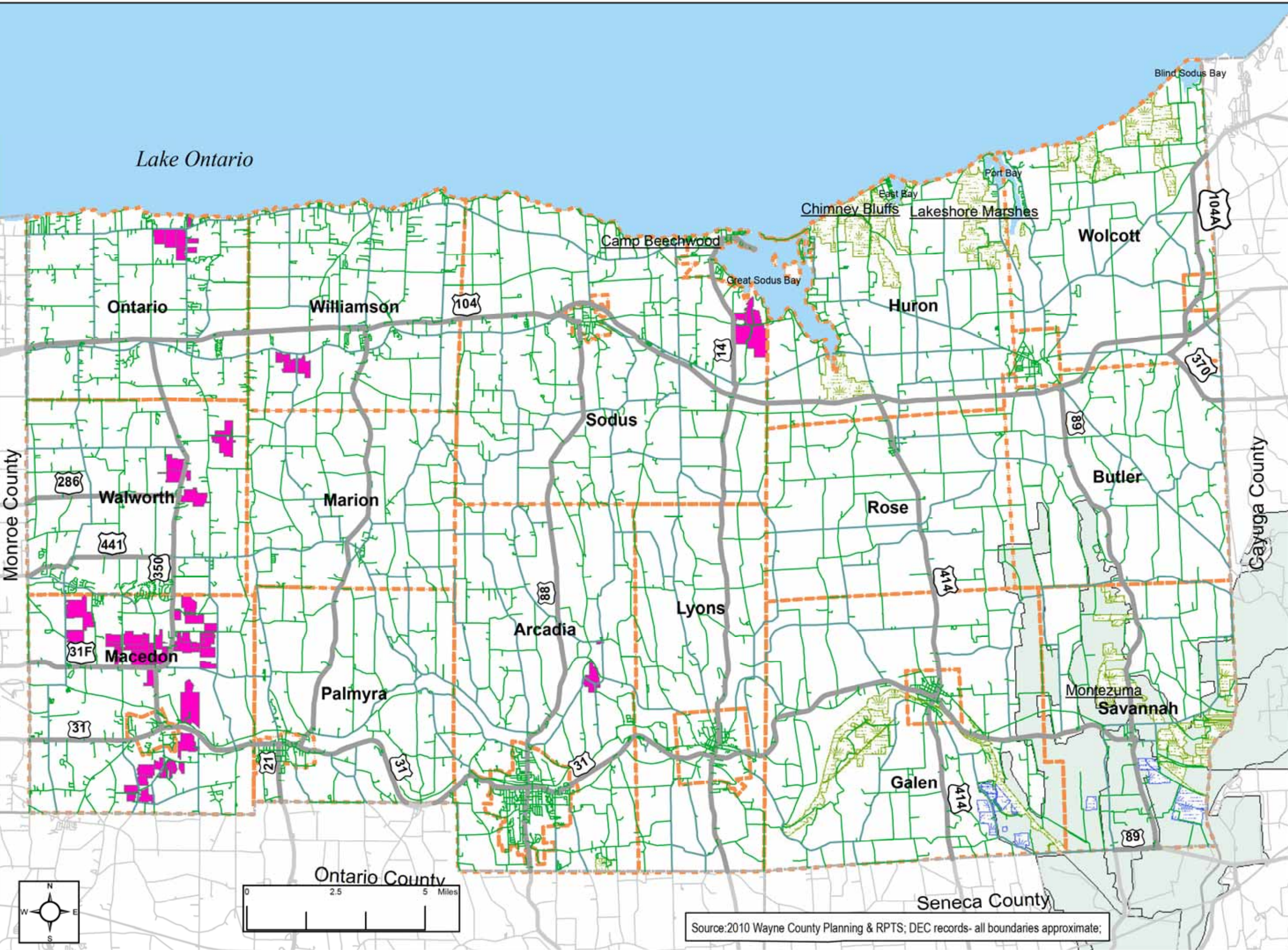
**State Land
Federal Land
N. Montezuma
Protected Farms**

- Legend**
-  Municipal Boundaries
 -  U.S. Fish and Wildlife
 -  Conservation Easement Farms
 -  New York State Holdings
 -  N. Montezuma Wetlands Project

**MAP
NO. 9**

Prepared by:
Wayne County Planning

November, 2010



Source: 2010 Wayne County Planning & RPTS; DEC records- all boundaries approximate;

Agricultural and Farmland Protection Plan for Wayne County

Development Pressure Trends

Legend

Building Trends
Development occurred:

- + Before 1937
- + 1937 to 1980
- + 1980 to 2010
- Municipal Boundaries

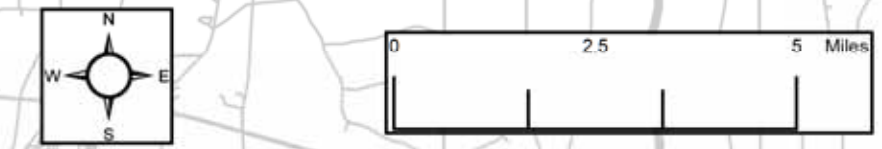
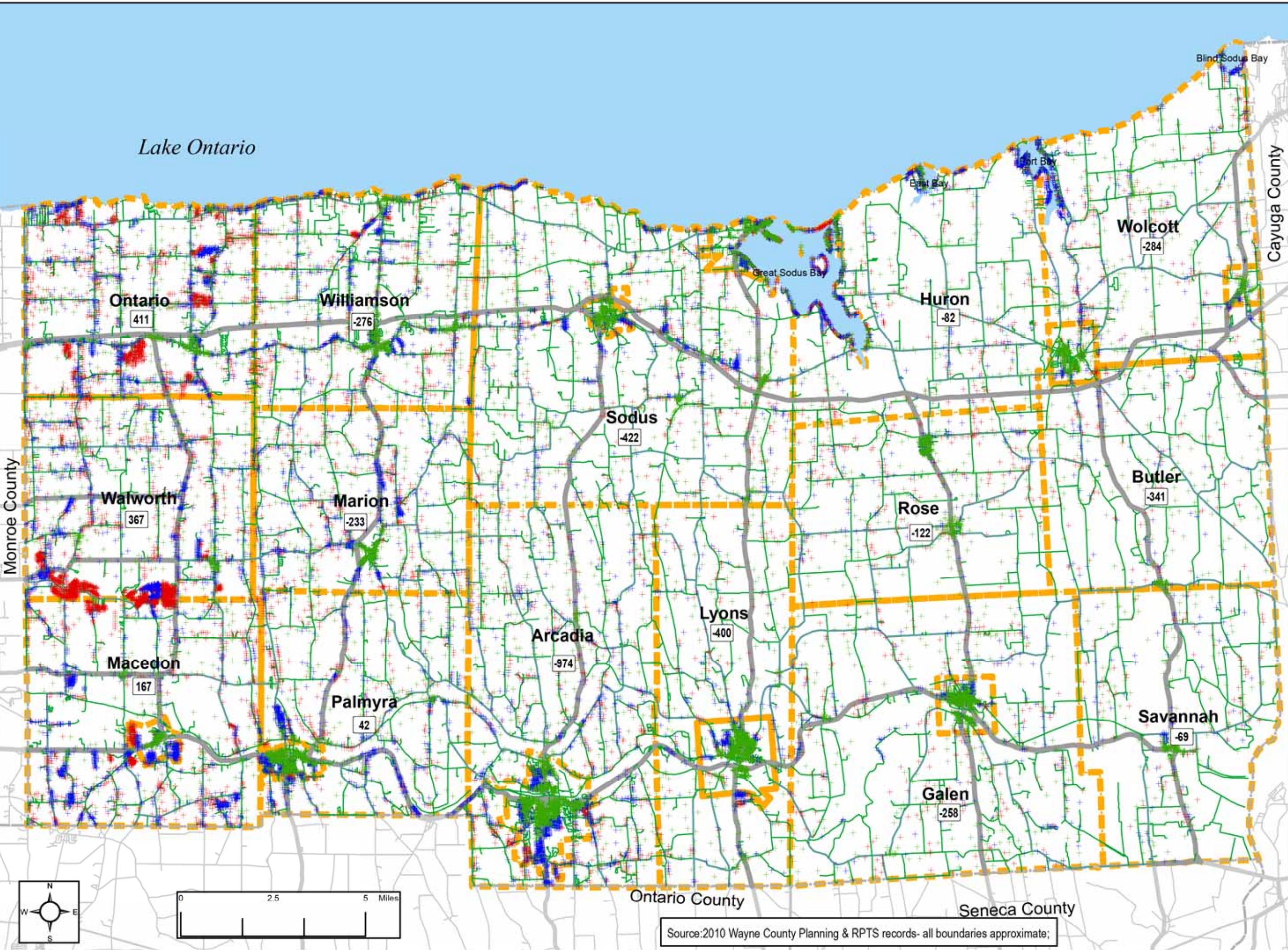
□ Population change 1980 to 2010

Based on Year_built field as supplied by Town Assessors. Not all parcels have data in this field, most residential parcels do.

MAP NO. 10

Prepared by:
Wayne County Planning

November, 2010



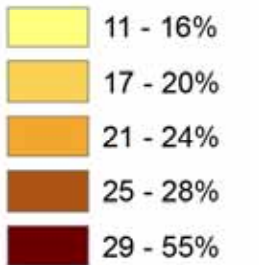
Source: 2010 Wayne County Planning & RPTS records- all boundaries approximate;

**Agricultural and
Farmland Protection
Plan for
Wayne County**

**Development
Pressure
Trends
Built After 1980**

**Buildings built from
1980 to 2010**

% change



Municipal Boundaries

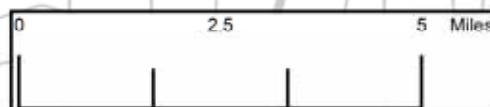
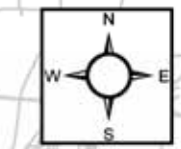
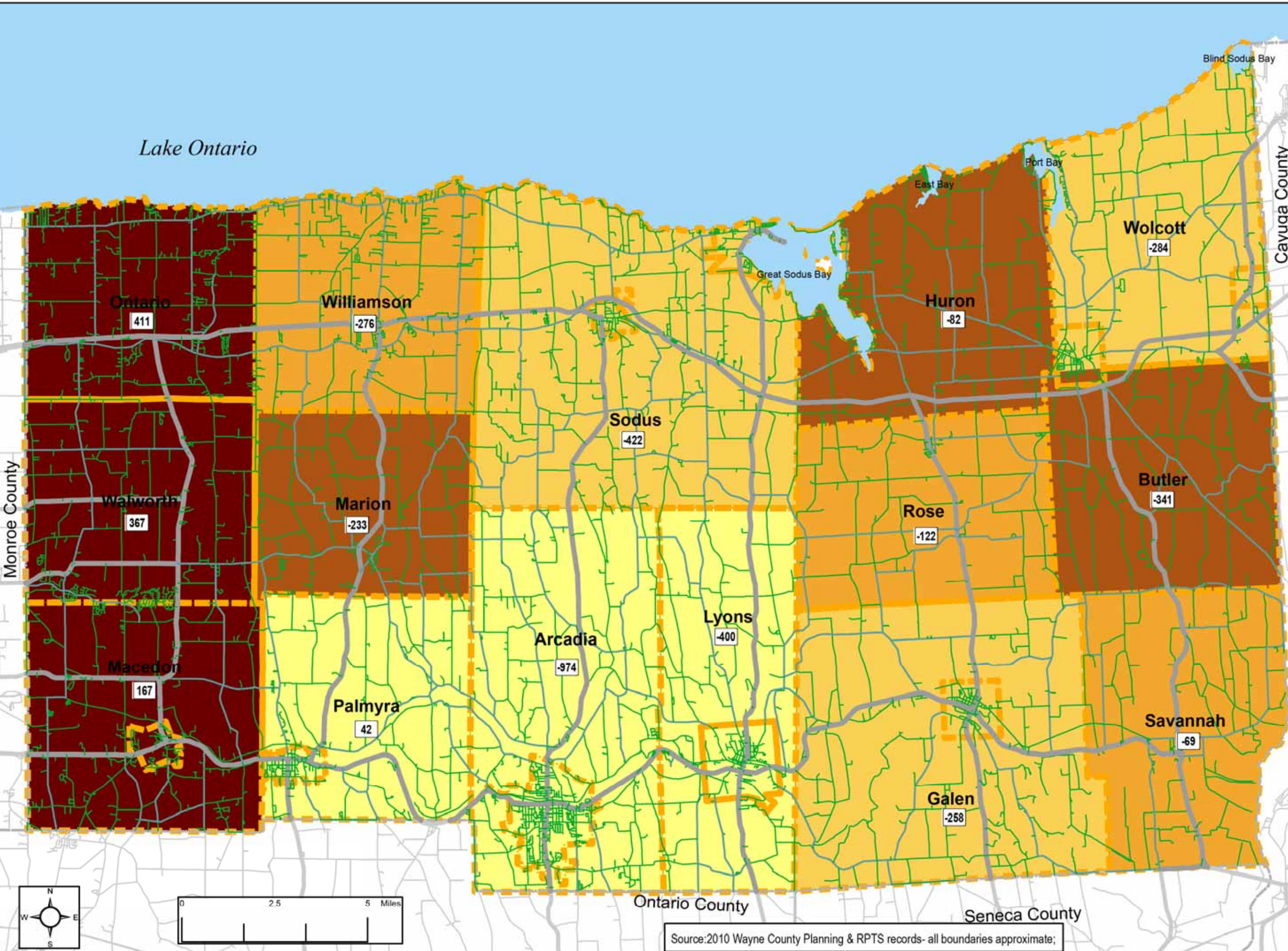
Population change
1980 to 2010

Based on Year_built field as
supplied by Town Assessors.
Not all parcels have data in
this field, most residential
parcels do.

**MAP
NO. 11**

Prepared by:
Wayne County Planning

November, 2010



Source: 2010 Wayne County Planning & RPTS records- all boundaries approximate;

**Agricultural and
Farmland Protection
Plan for
Wayne County**

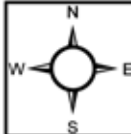
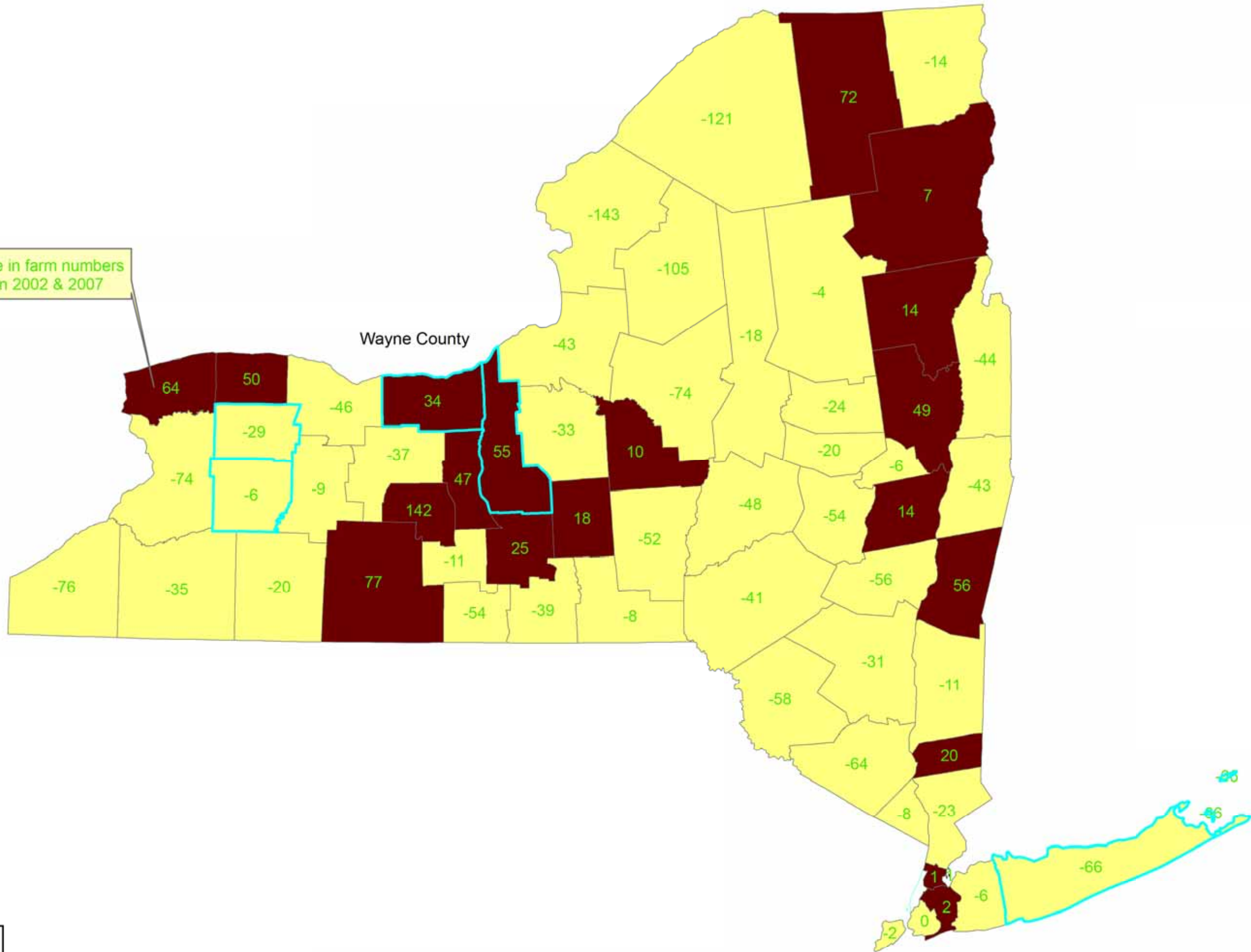
**Changes in
Number of
Farms
2002 to 2007**

Legend

**nys counties
CHANGE_200**

- Decrease in Farm numbers
- Increase in Farm numbers
- Top Five Ag Counties

Change in farm numbers
between 2002 & 2007



Source: 2007 USDA Census of Agriculture

**MAP
NO. 12**

Prepared by:
Wayne County Planning

November, 2010